

Ride With An Attitude



UTV/LSV MODEL 1500E BRUSHLESS ELECTRIC OWNER'S & PARTS MANUAL

For additional information, please see us at
www.badboymowers.com

Bad Boy, Inc.
102 Industrial Drive
Batesville, Arkansas 72501
(870) 698-0090





BAD BOY MOWERS UTILITY VEHICLE (UTV)

FOR MODEL: 1500E BRUSHLESS

WARNING

A WARNING indicates a hazardous situation which, if not avoided, may result in death or serious injury.

CAUTION

A CAUTION indicates a hazardous situation which, if not avoided, may result in minor or moderate injury.

NOTICE

A NOTICE indicates a situation that may result in property damage.

Warnings and Safety	pages 3–12
Features and Controls.....	pages 13–15
Operation	pages 16–19
Maintenance	pages 20–27
Warranty	page 28
Vehicle Identification Log.....	page 29
Parts Section	page 30–44
Contact Information	page 48

A Message from Bad Boy, Inc.

Thank you for purchasing a Bad Boy Mowers Utility Vehicle (UTV), and welcome to our family of Bad Boy, Inc. product owners. For safe and enjoyable operation of your UTV, be sure to follow the instructions and recommendations in this owner's manual. Your manual includes instructions for minor maintenance, but major repairs should be performed only by a Certified Dealer Technician. All information enclosed within this publication is based on the latest product information at the time of publication. Due to constant improvements in the design and quality of production components, some minor discrepancies may result between the actual vehicle and the information presented in this publication. Depictions and/or procedures in this publication are intended for reference use only. No liability can be accepted for omissions or inaccuracies..

WARNING

Improper vehicle use can result in Severe Injury or Death.

AGE 16 WARNING

Operating this vehicle if you are under the age of 16 increases your chance of severe injury or death. NEVER operate this vehicle if you are under age 16 or without a valid driver's license.

WARNING

Read, understand, and follow all of the instructions and safety precautions in this manual and on all product labels. Failure to follow the safety precautions could result in serious injury or death.

VENTILATION WARNING

Hydrogen gas is generated in the charging cycle of batteries and is explosive in concentrations as low as 4%. Because hydrogen gas is lighter than air, it will collect in the ceiling of buildings necessitating proper ventilation. Five air exchanges per hour are considered the minimum requirement. Never charge a vehicle in an area that is subject to flame or spark. Pay particular attention to natural gas or propane gas water heaters and furnaces. Always use a dedicated circuit for each battery charger. Do not permit other appliances to be plugged into the receptacle when the charger is in operation. Chargers must be installed and operated in accordance with charger manufacturer's recommendations or applicable electrical code (whichever is higher).

OWNER'S REGISTRATION AND TRAINING CERTIFICATE

PRINTED ON THE INSIDE BACK COVER,
MUST BE FILLED OUT AND SIGNED BY
PURCHASER AND DEALER.

DO NOT DRIVE:

- On hills steeper than 15 degrees.
- With non-Bad Boy Mowers UTV approved accessories—they may seriously affect stability.
- These vehicles are not to be driven on public roads. *(Does not apply to LSV model)*
- With more than two passengers, or passengers under age five.
- At speeds too fast for your skills or the conditions.
- After or while using Alcohol or Drugs.
- On paved surfaces—pavement may critically affect the handling and control. *(Does not apply to LSV model)*

ALWAYS USE THESE INSTRUCTIONS WHILE OPERATING UTV:

- Wear eye protection and keep hands and feet in vehicle at all times.
- Use extra caution when carrying passengers.
- Make sure passenger(s) reads and understands all safety labels.
- Look out for branches or other hazards that could enter vehicle.
- Avoid sharp turns or turns while applying heavy throttle.
- Operate slowly in reverse.

Information contained in this manual is subject to change without notice.

The manufacturer is not liable for errors in this manual or for incidental or consequential damages that result from the use of the material in this manual.

- These vehicles are designed and manufactured for off-road use. *(Does not apply to LSV model)*
- They do not conform to Federal Motor Vehicle Safety Standards and are not equipped for operation on public streets. *(Does not apply to LSV model)*
- Some communities may permit these vehicles to be operated on their streets on a limited basis and in accordance with local ordinances.
- With electric powered vehicles, be sure that all electrical accessories are grounded directly to the battery (-) post.
- Never use the chassis or body as a ground connection.
- Never modify the vehicle in any way that will alter the weight distribution of the vehicle, decrease its stability or increase the speed beyond the factory specification. Such modifications can cause serious personal injury or death.
- Modifications that increase the speed and/or weight of the vehicle will extend the stopping distance and may reduce the stability of the vehicle. Do not make any such modifications or changes.
- The manufacturer prohibits and disclaims responsibility for any such modifications or any other alteration which would adversely affect the safety of the vehicle.
- Always follow the manufacturer's directions if you do any maintenance on your vehicle. Be sure to disable the vehicle before performing any maintenance. Disabling includes removing the key from the key switch and removal of a battery wire(s).

WARNING

This Vehicle is NOT a TOY. NEVER let any child play on this machine even while parked.

- Always insulate any tools used within the battery area in order to prevent sparks or battery explosion caused by shorting the battery terminals or associated wiring. Remove the batteries or cover exposed terminals with an insulating material.
- Always check the polarity of each battery terminal and be sure to rewire the batteries correctly.
- Always use specified replacement parts. Never use replacement parts of lesser quality.
- Always use recommended tools.
- Always determine that tools and procedures not specifically recommended by the manufacturer will not compromise the safety of personnel nor jeopardize the safe operation of the vehicle.
- Always support the vehicle using wheel chocks and safety stands. Never get under a vehicle that is supported by a jack. Lift the vehicle in accordance with the manufacturer's instructions.
- Never attempt to maintain a vehicle in an area where exposed flame is present or persons are smoking.
- Always be aware that a vehicle that is not performing as designed is a potential hazard and must not be operated.
- The manufacturer cannot anticipate all situations, therefore people attempting to maintain or repair the vehicle must have the skill and experience to recognize and protect themselves from potential situations that could result in severe personal injury or death and damage to the vehicle.
- Always test drive the vehicle after any repairs or maintenance. All tests must be conducted in a safe area that is free of both vehicular and pedestrian traffic.
- Always replace damaged or missing warning, caution or information labels.
- Always keep complete records of the maintenance history of the vehicle.

OPERATOR WARNING

- Always use the vehicle in a responsible manner and maintain the vehicle in safe operating condition.
- Always read and observe all warnings and operation instruction labels affixed to the vehicle.
- Always follow all safety rules established in the area where the vehicle is being operated.
- Always reduce speed to compensate for poor terrain or conditions.
- Always apply service brake to control speed on steep grades.
- Always maintain adequate distance between vehicles.
- Always reduce speed in wet areas.
- Always use extreme caution when approaching sharp or blind turns.
- Always use extreme caution when driving over loose terrain.
- Always use extreme caution in areas where pedestrians are present.
- Always maintain your vehicle in accordance with the manufacturer's periodic service schedule.
- Always ensure that mechanics performing repairs are trained and qualified to do so.
- Always follow the manufacturer's directions if you do any maintenance on your vehicle.
- Be sure to disable the vehicle before performing any maintenance. Disabling includes removing the key from the key switch and removal of a battery wire.
- Use extreme caution and, if unsure as to the potential for injury, refer the repair or maintenance to a qualified mechanic.

WASH HANDS AFTER HANDLING!

BATTERIES AND RELATED PARTS CONTAIN LEAD

OPERATOR SAFETY

WARNING

Failure to follow the warnings contained in this manual can result in severe injury or death.

A Bad Boy Mowers Utility Vehicle (UTV/LSV) is not a toy and can be hazardous to operate. This vehicle handles differently than other vehicles, such as motorcycles and cars. A collision or rollover can occur quickly, even during routine maneuvers like turning, or driving on hills or over obstacles, if you fail to take proper precautions.

Read and understand your owner's manual and all warnings before operating the vehicle.

Know Your Vehicle

As the operator of the vehicle, you are responsible for your personal safety, the safety of others, and the protection of our environment. Read and understand your owner's manual, which includes valuable information about all aspects of your vehicle, including safe operating procedures.

The Bad Boy Mowers UTV is an off-road vehicle. *(Does not apply to LSV model)* Familiarize yourself with all laws and regulations concerning the operation of this vehicle in your area.

We strongly advise you to strictly follow the recommended maintenance program outlined in your owner's manual. This preventive maintenance program is designed to ensure that all critical components on your vehicle are thoroughly inspected at specific intervals.

SAFETY

Operator Safety

WARNING

Serious injury or death can result if you do not follow these instructions and procedures, which are outlined in further detail within your owner's manual. Read this manual and all labels carefully. Follow the operating procedures described.

- Never allow anyone without a valid driver's license to operate this vehicle.
- Minimum age recommendation for passengers is five years old. Passengers under five years of age require special restraints which are not available with this vehicle. Driver and passenger should wear their seat belts at all times.
- Never permit a guest to operate this vehicle unless the guest has read this manual and all product labels.
- To reduce tip over risk, be especially careful when encountering obstacles and slopes and when braking on hills or turns.
- This vehicle is for off road use only. Never operate on public roads. Always avoid paved surfaces.
- Helmets are recommended whenever driving this vehicle in an aggressive manner.
- Eye protection is recommended at all times.
- Never consume alcohol or drugs before or while operating this vehicle.
- Never operate at excessive speeds. Always travel at a speed proper for the terrain, visibility and operating conditions, and your experience.
- Never attempt jumps or other stunts.
- Always inspect your vehicle each time you use it to make sure it's in safe operating condition.
- Always follow the inspection and maintenance procedures and schedules described in this manual.

WARNING

Always keep both hands on the steering wheel and both feet on the floorboards of the vehicle during operation.

Always travel slowly and use extra caution when operating on unfamiliar terrain. Be alert to changing terrain.

Never operate on excessively rough, slippery or loose terrain.

Safety Decals and Locations:

Warning decals have been placed on the vehicle for your protection. Read and follow the instructions of the decals on the vehicle carefully.

If any of the decals depicted in this manual differ from the decals on your vehicle, always read and follow the instructions of the decals on the vehicle.

If any decal becomes illegible or comes off, contact your Bad Boy Mowers UTV/LSV dealer to purchase a replacement. Replacement safety decals are provided by Bad Boy, Inc.

- Do Not Tow Heavy Loads up Steep hills or embankments,
- Do Not Pull Heavy Trailers up Steep hills or embankments.
- Do Not Ride in Cargo Box. Never Carry Passengers in Cargo Box!
- Always follow proper procedures for turning as described in this manual. Practice turning at slow speeds before attempting to turn at faster speeds. Never turn at excessive speeds.
- Always have this vehicle checked by an authorized Bad Boy Mowers UTV/LSV dealer if it has been involved in an accident.
- Never operate this vehicle on hills too steep for the vehicle or for your abilities. Practice on smaller hills before attempting larger hills.
- Always follow proper procedures for climbing hills as described in this manual. Check the terrain carefully before attempting to climb a hill.
- Never climb hills with excessively slippery or loose surfaces.
- Never open the throttle suddenly. Never go over the top of a hill at high speed.
- Always follow the proper procedures outlined in this manual for traveling downhill and for braking on hills. Check the terrain carefully before descending a hill. Never travel downhill at high speed. Avoid going downhill at an angle, which would cause the vehicle to lean sharply to one side. Travel straight down the hill where possible.
- Always check for obstacles before operating in a new area. Never attempt to operate over large obstacles such as rocks or fallen trees. Always follow the proper procedures outlined in this manual when operating over obstacles.
- Always be careful of skidding or sliding. On slippery surfaces such as ice, travel slowly and exercise caution to reduce the chance of skidding or sliding out of control.



- Never operate your vehicle in fast-flowing water or in standing water. Severe damage will occur to motor if water or debris enters open windings. Wet brakes may have reduced stopping ability. Test your brakes after leaving water. If necessary, apply them lightly several times to let friction dry out the pads.
- Always be sure there are no obstacles or people behind your vehicle when operating in reverse. When it's safe to proceed in reverse, move slowly. Avoid turning at sharp angles in reverse.
- Always use the proper size and type of tires specified in this manual.
- Always maintain proper tire pressure.
- Never exceed the stated load capacity for this vehicle. Cargo should be properly distributed and securely attached. Reduce speed and follow the instructions in this manual for hauling cargo or pulling a trailer. Allow a greater distance for braking.
- Always wear the seat belts when operating this vehicle. Seat belts reduce the severity of injury in case of a sudden stop or collision.
- Always keep arms and legs inside the cab frame while the vehicle is in motion.
- Always engage the park brake before getting out of the vehicle.
- Always apply the brakes before engaging or releasing the park brake.
- Always remove the master switch key when the vehicle is not in use to prevent unauthorized use or accidental starting.

BATTERY PROLONGED STORAGE NOTICE

All batteries will self discharge over time. The rate of self discharge varies depending on the ambient temperature and the age and condition of the batteries.

A fully charged battery will not freeze in winter temperatures unless the temperature falls below -75° F (-60° C).

For winter storage, the batteries must be clean, fully charged and disconnected from any source of electrical drain.

The battery charger and the controller are both sources of electrical drain. Unplug the battery charger DC plug from the vehicle receptacle.

As with all electric vehicles, the batteries must be checked and recharged as required or at a minimum of 30 day intervals.

***FOR MORE INFORMATION ABOUT SAFETY,
call Bad Boy, Inc:***

***Toll Free: (866) 622 3269
(870) 698 0090***

SAFETY

Operator Safety

WARNING

Make sure your Bad Boy Mowers UTV is in excellent operating condition at all times. We strongly recommend that the operator check all safety components before each ride.

UTV's by Bad Boy Mowers are designed to provide safe operation when used as directed. Failure of critical machine components may result from operation with any modifications, especially those that increase speed or power. The vehicle may become aerodynamically unstable at speeds higher than those for which it is designed. Loss of control may occur at higher speeds. Modifications may also create a safety hazard and lead to bodily injury.

We are concerned for the safety of our customers and for the general public. Therefore, we strongly recommend that consumers do not install on a Bad Boy Mowers UTV/LSV any equipment that may increase the speed or power of the vehicle, or make any other modifications to the vehicle for these purposes. Any modifications to the original equipment of the vehicle create a substantial safety hazard and increase the risk of bodily injury.

The warranty on your Bad Boy Mowers UTV is terminated if any equipment has been added to the vehicle, or if any modifications have been made to the vehicle, that increase its speed or power.

NOTE: The addition of certain accessories, including (but not limited to) mowers, blades, tires, sprayers, or large racks, may change the handling characteristics of the vehicle. Use only Bad Boy Mowers UTV-approved accessories, and familiarize yourself with their function and effect on the vehicle.

POTENTIAL HAZARD

Stalling, rolling backwards while climbing a hill

WHAT CAN HAPPEN

Vehicle overturn

HOW TO AVOID THE HAZARD

- Maintain a steady speed when climbing a hill.
- If you lose all forward speed:
- Apply the brakes gradually until the vehicle is fully stopped. Place the transmission in reverse and slowly allow the vehicle to roll straight downhill while applying light brake pressure to control speed.
- Engage the park brake after fully stopped.

If you begin rolling backwards:

- Never apply motor power.
- Apply the brakes gradually.
- When fully stopped, engage the park brake.
- In the event of an accident, have a qualified service dealer check the complete vehicle for possible damage, including (but not limited to) brakes, throttle and steering.

POTENTIAL HAZARD

Operating this vehicle at excessive speeds

WHAT CAN HAPPEN

Loss of control, accident

HOW TO AVOID THE HAZARD

- Always travel at a speed proper for the terrain, visibility and operating conditions, and your experience.
-

POTENTIAL HAZARD

Operating on frozen bodies of water.

WHAT CAN HAPPEN

Severe injury or death can result if the vehicle and/or the operator fall through the ice.

HOW TO AVOID THE HAZARD

- Never operate the UTV on a frozen body of water.
-

POTENTIAL HAZARD

Failure to inspect the vehicle before operating

Failure to properly maintain the vehicle

WHAT CAN HAPPEN

Accident, equipment damage

HOW TO AVOID THE HAZARD

- Always inspect your UTV before each use to make sure it's in safe operating condition.
 - Always follow the inspection and maintenance procedures and schedules described in the Owner's Manual.
-

POTENTIAL HAZARD

Failure to use extra caution when operating this vehicle on unfamiliar terrain

WHAT CAN HAPPEN

Loss of control, vehicle overturns

HOW TO AVOID THE HAZARD

- Travel slowly and use extra caution when operating on unfamiliar terrain.
 - Always be alert to changing terrain conditions when operating the vehicle. You may come upon hidden rocks, bumps, or holes suddenly, without enough time to react.
-

SAFETY

Operator Safety

WARNING

After any overturn or accident, have a qualified service dealer inspect the entire vehicle for possible damage, including (but not limited to) brakes, throttle and steering systems.

CAUTION

- Hot Electric Motor Temperature can exceed 200° F.
- Do not attempt any type of servicing: operations before reading and understanding all notes, cautions and warnings in this manual.
- Wear eye protection when working on vehicle. **Use extra care when working around batteries, or using solvents or compressed air.**
- Turn off all electrical loads from battery before removing battery wires.
- Wrap wrenches with vinyl tape to reduce possibility of a dropped wrench 'shorting out' a battery, which could result in an explosion.
- Treat all electrolyte spills to body and eyes with extended flushing with clear water. Contact a physician.
- Insulate metal aerosol containers of battery terminal protectant to reduce chance of contacting battery terminals which could result in an explosion.

WARNING

Remove flammable material containers from box before filling. Passengers can be thrown off. This can cause serious injury or death. Never carry passengers in cargo box.

CONTAINER/PASSENGER/TIRE PRESSURE WARNING

- Maximum 1500E Box Load 500 lbs.
- IMPROPER TIRE PRESSURE OR OVERLOADING can cause loss of control resulting in SEVERE INJURY OR DEATH.
- TIRE PRESSURE IN PSI: **FRONT 12 REAR 12**
- MAXIMUM WEIGHT CAPACITY INCLUDES WEIGHT OF OPERATOR, PASSENGER, CARGO AND ACCESSORIES.
- Maximum 1500E Weight Load is 1250 lbs.
- Overloading or carrying tall, off-center, or unsecured loads will increase your risk of losing control. Loads should be centered and carried as low as possible in box. For stability on rough or hilly terrain, reduce speed and cargo. Be careful if load extends over the side of the box.

FEATURES AND CONTROLS

Ride Your Bad Boy for miles, then simply plug it into any standard wall socket.

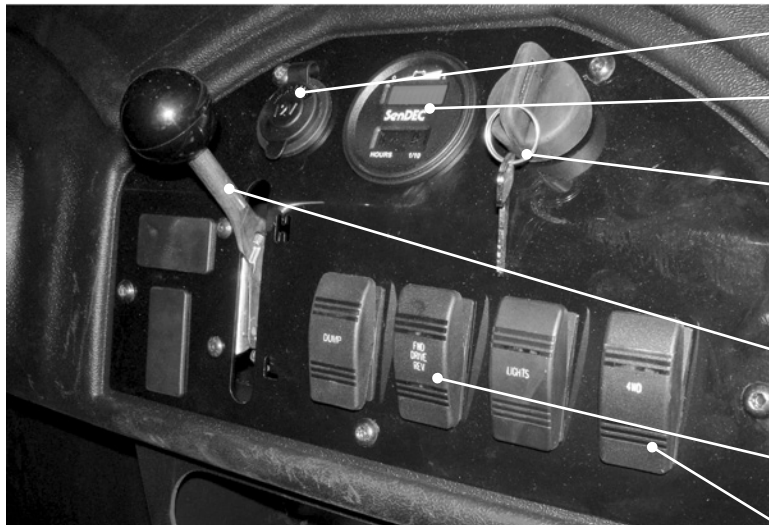


The batteries in the Bad Boy Mowers UTV/LSV are located under the seat, hood and bed.

DASHBOARD CONTROLS

NOTICE

Do not attempt to shift the transmission while the vehicle is moving or damage to the transmission could result. Always shift when the vehicle is stationary.



12V Plug-In

Battery Meter

Master Switch

The master switch is a two-position, key-operated switch. The key can be removed from the switch when it is in the OFF position.

High/Low Gear Selector

Direction Selector

4-Wheel Drive Selector

ACCELERATOR AND BRAKE CONTROLS



Brake

Accelerator

To help prevent the vehicle from rolling, engage the park brake when parking the vehicle. When the park brake is fully engaged and the park brake indicator is illuminated. Parking Brake has an interlock switch which prevents vehicle operation while the parking brake is set

NOTE: This feature will not operate properly if the park brake connector or switch (under the hood) malfunctions or becomes disconnected, or if the switch has moved. Check for disconnection, and then see your dealer promptly if this feature fails to operate properly.

Inspect and adjust park / Service Brake cable tension after the first 25 hours of operation and every 100 hours thereafter to ensure proper cable tension.

Apply the brakes.

To release the park brake, apply the brakes

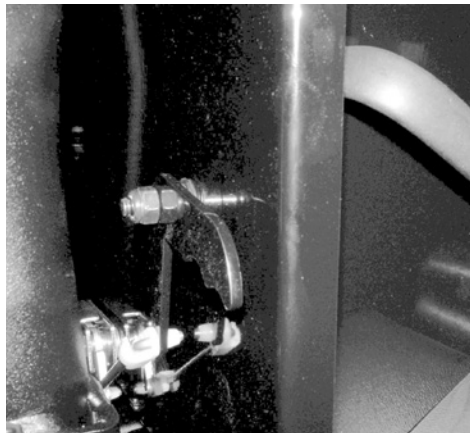
Depressing Service Brake unlocks Parking Brake

WARNING

Operating the vehicle while the park brake is engaged could cause loss of control and result in serious injury or death. Always disengage the park brake before operating the vehicle.

BED DUMP (MANUAL)

Electric is Optional and has a dashboard switch



Dumping the Cargo Box

WARNING

Operating the vehicle while the cargo box is raised could result in severe injury. Never operate this vehicle with the cargo box in the raised position.

WARNING

If the weight distribution on the box is located toward the rear of the box, the box may dump unexpectedly and cause serious injury to the operator or bystanders.

Never operate the dump lever without ensuring that the load is positioned evenly or at the front of the box.

SEAT BELTS

The UTV by Bad Boy is equipped with three point-style seat belts for the operator and passenger. To wear the seat belt properly, follow this procedure:

- Place the belt across your lap as low on your hips as possible.
- Make sure that the belt is not twisted.
- Push the latch plate into the buckle until it clicks.
- Release the strap, it will self tighten.
- To release the seat belt, press the square red button in the buckle's center.

OPERATION

Pre-Ride Inspection

WARNING

If a proper inspection is not done before each use, severe injury or death could result. Always inspect the vehicle before each use to ensure it's in proper operating condition.

Part Item	Comment
Brake system / pedal travel	Ensure proper operation
Brake fluid.....	Ensure proper level
Steering	Ensure free operation
Tires.....	Inspect condition and pressure
Wheels/fasteners.....	Inspect, ensure fastener tightness
Frame nuts, bolts, fasteners	Inspect, ensure tightness
Indicator lights and switches.....	Ensure operation
Headlamp	Check operation, apply dielectric grease when lamp is replaced

Driving On Slippery Surfaces

When driving on slippery surfaces such as wet trails, loose gravel, or ice, be alert for the possibility of skidding and sliding. Under these conditions, follow these precautions:

- Slow down when entering slippery areas.
- Maintain a high level of alertness, reading the trail and avoiding quick, sharp turns, which can cause skids.
- Correct a skid by turning the steering wheel in the direction of the skid.
- Drive with 4WD engaged to assist in controlling the vehicle.

WARNING

Failure to exercise care when operating on slippery surfaces can result in loss of tire traction and cause loss of control, accident, and serious injury or death. Never apply the brakes during a skid. Do not operate on excessively slippery surfaces. Always reduce speed and use additional caution when operating on slippery surfaces.

Driving Uphill

Whenever traveling uphill, follow these precautions:

- Always travel straight uphill.
- Avoid steep hills (15° maximum).
- Keep both feet on the floor.
- Proceed at a steady rate of speed.

WARNING

Climbing hills improperly can cause loss of control or vehicle overturn. Always check the terrain carefully before climbing a hill. Braking and handling are greatly affected when operating in hilly terrain. Improper procedure could cause loss of control or overturn and result in serious injury or death. Avoid climbing steep hills (15° maximum). Use extreme caution when operating on hills, and follow proper operating procedures outlined in the owner's manual. Never climb hills with excessively slippery or loose surfaces. Never open the throttle suddenly. Never go over the crest of a hill at high speed. An obstacle, a sharp drop, or another vehicle or person could be on the other side of the hill.

OPERATION

Driving on side of a hill

WARNING

Crossing hillsides or turning on hills can result in loss of control or vehicle overturn, resulting in severe injury or death. Avoid crossing the side of a hill when possible. When unavoidable, use extreme caution. Avoid operating on steep hills. And Use Slow Speed (15° maximum).

Driving Downhill

Whenever descending a hill, follow these precautions:

- Proceed directly downhill.
- Slow down.
- Apply the brakes slightly to aid in slowing.

WARNING

Traveling downhill improperly could cause loss of control or vehicle overturn. Always check the terrain carefully before descending a hill. Never descend a hill at high speed. Excessive speed may result in loss of vehicle control and lead to serious injury or death. Always operate slowly when traveling downhill. Avoid descending a hill at an angle, which would cause the vehicle to lean sharply to one side. Travel straight downhill when possible.

Driving Through Water

WARNING

The large tires on your UTV may cause the vehicle to float in deep or fast-flowing water, which could result in loss of control and lead to serious injury or death. Never cross deep or fast-flowing water with your UTV.

Your Bad Boy Mowers UTV can operate through water up to a maximum recommended depth equal to the floorboards. Follow these procedures when operating through water:

- Always determine water depths and current before entering.
- Choose a crossing where both banks have gradual inclines.
- Proceed slowly, avoiding rocks and obstacles.
- After leaving water, always dry the brakes by applying light pressure to the pedal repeatedly until braking action is normal.

NOTICE

Immersion can result in major damage if the vehicle isn't serviced correctly and promptly. After immersion, always take the vehicle to your dealer service.

If it's impossible to bring the vehicle to your dealer before using the motor, perform the service outlined on page and take the vehicle to your dealer at the first opportunity.

Motor & Drive Train should not remain immersed for more than a minute.

OPERATION

Driving Over Obstacles

Be alert! Look ahead and learn to read the terrain you're traveling on. Watch for hazards such as logs, rocks and low hanging branches.

WARNING

Severe injury or death can result if your vehicle suddenly comes in contact with a hidden obstacle. Not all obstacles are immediately visible. Reduce speed and travel with caution in unfamiliar terrain.

Driving in Reverse

Follow these guidelines when operating in reverse:

- Back slowly.
- Apply the brakes lightly for stopping.
- Avoid turning at sharp angles.
- Always avoid backing downhill.
- Never open the throttle suddenly while backing.
- Always inspect left and right fields of vision before backing.

WARNING

Failure to use caution when operating in reverse can result in serious injury or death. Before shifting into reverse, always check for obstacles or people behind the vehicle and follow the reverse operation procedures outlined in this manual. Always back slowly.

Parking on an Incline

Avoid parking on an incline if possible. If it's unavoidable, follow these precautions:

- Apply the brakes.
- Place the transmission in gear.
- Engage the park brake.
- Turn the switch off.
- Block the rear wheels on the downhill side.

WARNING

A rolling vehicle can cause property damage and serious injury. Always engage the park brake when stopping the engine. Always block the downhill side of the wheels if leaving the vehicle on a hill. Operating the vehicle while the park brake is engaged could cause loss of control and result in serious injury or death. Always disengage the park brake before operating the vehicle.

OPERATION

Hauling Cargo

The Bad Boy Mowers UTV has been designed to carry or tow specific capacities. Always read and understand the load distribution warnings listed on the warning labels. Never exceed the listed capacities.

WARNING

Driving with passengers in the cargo box can result in severe injury or death. Never allow passengers to ride in the cargo box. Passengers must always ride in the cab with seat belts fastened securely.

Towing Loads

Always follow these precautions when towing:

- Never exceed 10 MPH while towing a trailer.
- Towing a trailer increases braking distance.
- Never tow a trailer on a grade steeper than 15°.

WARNING

Towing improperly can alter vehicle handling and may cause loss of control or brake instability, which can result in serious injury or death.

Parking the Vehicle

- Apply the brakes. Stop the vehicle on a level surface.
- Turn the motor off.
- Engage the park brake.
- Remove the ignition switch key to prevent unauthorized use.

WARNING

A rolling vehicle can cause property damage and serious injury or death. Always engage the park brake when stopping the engine.

MAINTENANCE

Periodic Maintenance

Careful periodic maintenance will help keep your vehicle in the safest, most reliable condition. Inspection, adjustment and lubrication of important components are explained in the periodic maintenance chart.

Inspect, clean, lubricate, adjust and replace parts as necessary. When inspection reveals the need for replacement parts, use genuine Bad Boy parts available from your Bad Boy Dealer.

NOTE: Service and adjustments are important for proper vehicle operation. If you're not familiar with safe service and adjustment procedures, have a qualified dealer perform these operations.

Maintenance intervals in the following chart are based upon average riding conditions and an average vehicle speed of approximately ten (10) miles per hour. Vehicles subjected to severe use must be inspected and serviced more frequently.

Severe Use Definition:

- Immersion in mud, water or sand
- Racing use
- Prolonged low speed, heavy load operation

WARNING

Improperly performing the procedures marked with a * could result in component failure and lead to serious injury or death. Have an authorized Bad Boy dealer perform these services.

PERIODIC MAINTENANCE CHART

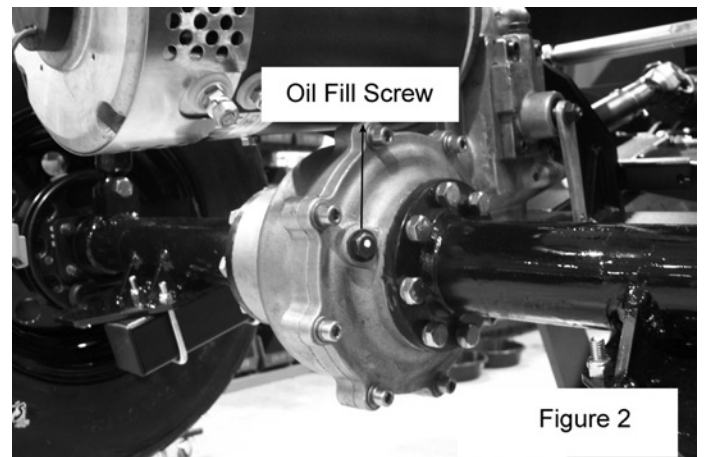
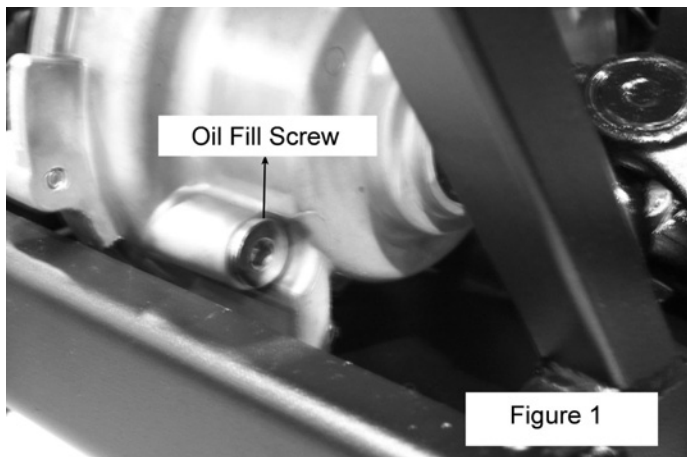
Perform all services at whichever maintenance interval is reached first.

P - Perform these procedures more often for vehicles subjected to severe use.
D - Have an authorized Bad Boy dealer perform these services.

CODE	PART / FUNCTION	UNIT	HOURS	WHEN	PROCEDURE
P	Front suspension	UTV/LSV		Pre-Ride	Make adjustments as needed.
P	Rear suspension	UTV/LSV		Pre-Ride	Make adjustments as needed.
P	Tires	UTV/LSV		Pre-Ride	Check pressure and make sure tread is acceptable.
P	Brake fluid level	UTV/LSV		Pre-Ride	Make sure fluid is just below the max line.
P	Brake pedal travel	UTV/LSV		Pre-Ride	Make sure brake pedal is not spongy.
P	Brake system	UTV/LSV		Pre-Ride	Make sure brakes are functional.
P	Wheels/fasteners	UTV/LSV		Pre-Ride	Check bead seat and wheel for cracks.
P	Frame fasteners	UTV/LSV		Pre-Ride	Make sure frame is tight.
D	Brake pad wear	UTV/LSV	10 H	Monthly	Make sure pads are within acceptable limits.
P	Batteries	UTV/LSV	20 H	Monthly	Check terminals; clean; test. See battery flyer.
P	Front Gear case Oil*	UTV/LSV	25 H	Monthly	Inspect level; change yearly.
P	Grease Zerk-Fittings	UTV/LSV	25 H	Monthly	Inspect level; change yearly.
P	Rear Gear case Oil **	UTV/LSV	25 H	Monthly	Inspect level; change yearly.
P	Transmission Oil	UTV/LSV	25 H	Monthly	Inspect level; change yearly.

* See figure 1

** See figure 2



PERIODIC MAINTENANCE CHART

CODE	ITEM	UNIT	HOURS	WHEN	PROCEDURE
P	Park brake cable tension	UTV/LSV	25 H	Monthly	Check tension, adjust
P	General lubrication***	UTV/LSV	50 H	3 Months	Lubricate all fittings, pivots, cables, etc.
P	Shift Linkage	UTV/LSV	50 H	6 Months	Inspect, lubricate, adjust
D	Steering	UTV/LSV	50 H	6 Months	Lubricate
P	Front Suspension	UTV/LSV	50 H	6 Months	Lubricate
P	Rear Suspension	UTV/LSV	50 H	6 Months	Lubricate*** See figures 3a and 3b below

Figure 3a **FRONT**

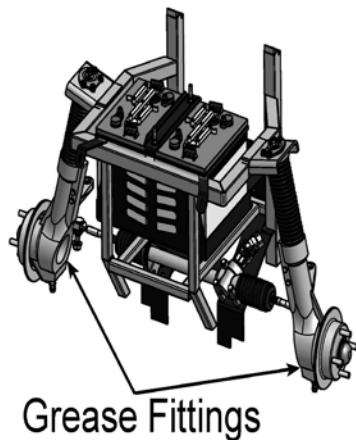
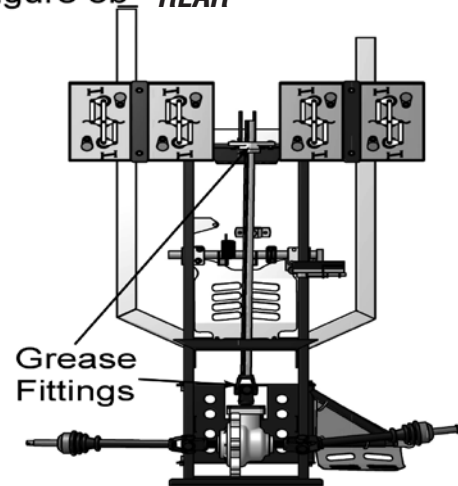


Figure 3b **REAR**



Unit may also have 2 grease fittings on the telescoping driveshaft.

Vehicle Immersion

NOTICE

If your electric vehicle becomes immersed, major motor damage can result if the machine is not thoroughly inspected. Take the vehicle to your dealer before starting the engine.

- If it's impossible to take your Bad Boy Mowers UTV to a dealer before starting it, follow the steps outlined below.
- Move the vehicle to dry land or at the very least, to water below the footrests.
- Take the vehicle to your dealer for service as soon as possible, whether you succeed in starting it or not.

MAINTENANCE

Foot Pedal Throttle System

WARNING

Failure to check or maintain proper operation of the foot pedal throttle system can result in an accident and lead to serious injury or death if the throttle pedal sticks during operation.

- Always check the pedal for free movement and return before starting the engine and occasionally during operation.
- Never start or operate this vehicle if it has a sticking or improperly operating throttle pedal.
- Immediately contact your dealer for service if throttle problems arise.

Brakes

The rear brakes are mechanical linkage drum type and front brakes are hydraulic disc type brakes. Press down on the brake pedal to engage the brakes.

Brake Fluid

Inspect the brake system routinely. Inspect the level of the brake fluid before each operation. Change the brake fluid every two years and any time the fluid becomes contaminated, the fluid level is below the minimum, or if the type and brand of the fluid in the reservoir are unknown.

- Position the vehicle on a level surface.
- If the fluid level is lower than the upper level line, add brake fluid to the upper (MAX) line.
- Apply the brake forcefully for a few seconds and check for fluid leakage around the fittings.
- If only front brakes are present, adjust rear linkage until front brakes catch slightly before the rear brakes catch.

WARNING

After opening a bottle of brake fluid, always discard any unused portion. Never store or use a partial bottle. Brake fluid is hygroscopic, meaning it rapidly absorbs moisture from the air. The moisture causes the boiling temperature of the brake fluid to drop, which can lead to early brake fade and the possibility of accident or severe injury.

Brake Inspection

- Check the brake system for fluid leaks.
- Check the brake pedal for excessive travel or a spongy feel.
- Check the friction pads for wear, damage and looseness.
- Inspect the brake disc spine and pad wear surface for excessive wear.
- Change pads when worn to 3/64" (1 mm).

MAINTENANCE

Park Brake Inspection

- Apply the brakes.
- Check the vehicle for movement. The vehicle should not roll while parked. If the vehicle moves, adjust the park brake.

Tires

Wheel Removal

- Apply the brakes. Engage the park brake.
- Loosen the wheel nuts slightly.
- Elevate the side of the vehicle by placing a suitable stand under the frame.
- Remove the lug nuts.

Wheel Installation

- Apply the brakes.
- Place the wheel in the correct position on the wheel hub. Be sure the valve stem is toward the outside and rotation arrows on the tire point toward forward rotation.
- Attach the lug nuts and finger tighten.
- Carefully lower the vehicle to the ground.
- Torque front lug nuts to 55 ft. lb. and rear lug nuts to 65 ft. lb.

Lights

WARNING

Poor lighting while driving can result in severe injury or death. Headlight lenses become dirty during normal operation. Wash the headlights frequently to maintain lighting quality. Hot components can cause burns to skin. Do not service the headlamps until they've cooled sufficiently.

Headlight Lamp Replacement

- Unplug the headlamp from the wiring harness.
- Be sure to pull on the connector, not on the wiring.
- Install the new lamp.
- Reinstall the harness assembly into the headlight assembly.

NOTE: Make sure the tab on the lamp locates properly in the housing.

MAINTENANCE

Battery

Your vehicle has conventional batteries.

Always keep battery terminals and connections free of corrosion. If cleaning is necessary, remove the corrosion with a stiff wire brush. Wash with a solution of one tablespoon baking soda and one cup water. Rinse well with tap water and dry off with clean shop towels. Coat the terminals with dielectric grease or petroleum jelly. Be careful not to allow cleaning solution or tap water into the battery.

Checking Battery Fluid Levels

Always use distilled water and never fill over lead plates inside battery.

WARNING

Battery electrolyte is poisonous. It contains sulfuric acid. Serious burns can result from contact with skin, eyes or clothing.

Conventional Battery

Antidote:

External: Flush with water.

Internal: Drink large quantities of water or milk. Follow with milk of magnesia, beaten egg, or vegetable oil.
Call physician immediately.

Eyes: Flush with water for 15 minutes and get prompt medical attention.

Batteries produce explosive gases.

Keep sparks, flame, cigarettes, etc. away. Ventilate when charging or using in an enclosed space. Always shield eyes when working near batteries.

KEEP OUT OF REACH OF CHILDREN.

MAINTENANCE

Cleaning and Storage — Washing the Vehicle

Keeping your UTV/LSV clean will not only improve its appearance but it can also extend the life of various components.

NOTICE: High water pressure may damage components. Bad Boy recommends washing the vehicle by hand or with a garden hose, using mild soap.

Certain products, including insect repellents and chemicals, will damage plastic surfaces. Do not allow these types of products to contact the vehicle.

- The best and safest way to clean your UTV/LSV is with a garden hose and a pail of mild soap and water.
- Use a professional-type washing cloth, cleaning the upper body first and the lower parts last.
- Rinse with clean water frequently.
- Avoid the use of harsh cleaners, which can scratch the finish.
- Do not use a power washer to clean the vehicle.
- Do not use medium to heavy duty compounds on the finish.
- Always use clean cloths and pads for cleaning and polishing. Old or reused cloths and pads may contain dirt particles that will scratch the finish.

If a high pressure water system is used for cleaning (not recommended), exercise extreme caution. The water may damage components and could remove paint and decals. Avoid directing the water stream at the following items:

- Wheel bearings
- Brakes
- Cab and body panels
- Labels and decals
- Electrical components and wiring
- Battery Charger

WARNING

The onboard 48vDC, 18 Amp Battery Charger is NOT Rated For Water Intrusion. DO NOT DIRECTLY SPRAY WITH WATER. Doing So May Cause Serious Injury or Death

NOTE: DIRECTLY SPRAYING onboard 48vDC, 18 Amp Battery Charger May VOID WARRANTY.

NOTE: If warning and safety labels are damaged, contact your Bad Boy dealer for free replacement.

- Grease all fittings immediately after washing.

MAINTENANCE

Aluminum Wheel Care (if equipped)

- Proper maintenance will protect aluminum wheels from corrosion, preserve wheel life and ensure a “like new” appearance for many years.
- Aluminum wheels exposed to road salt (or salt in the air in coastal areas) are more susceptible to corrosion if not properly cleaned.
- Clean aluminum wheels more often if they’re exposed to salt or other corrosive elements.
- Wash aluminum wheels frequently. Use a mild detergent. Never use abrasive cleaners on plated or painted surfaces.
- Rinse well with clear water. Soap, detergents, salt, dirt, mud and other elements can cause corrosion.
- Polish the clean aluminum wheels periodically. Use an automotive grade aluminum polish.
- Routinely and liberally apply a weather resistant wax to each polished aluminum wheel. Choose a product suitable for aluminum finishes.
- If light rust is found on the chrome finish, use steel wool (#0000-OTT grade) to remove it. Gently rub the affected areas with the steel wool until the corrosion has been removed.

Cleaning and Storage Tips

- Make any necessary repairs and clean the vehicle as recommended.
- The Bad Boy Electric UTV may be kept on charge for short-term storage and charging guidelines are followed.
- Routinely charge the UTV throughout the duration of storage.

2012 BAD BOY INC ALL ELECTRIC UTV MODELS LIMITED WARRANTY

Limited, One-Year Warranty

Bad Boy, Inc. will, at its option, repair or replace, without charge, any part covered by the warranty which is found to be defective in material and/or workmanship within one year after date of sale to the original retail purchaser of a new Bad Boy 4X4, Electric UTV. This limited warranty will be subject to certain limitations. Also, Bad Boy, Inc. will not be responsible for defects attributed to abuse, accidents, nature or vandalism.

Warranty Period

Bad Boy Mowers UTV 4X4 electric vehicles shall carry a warranty of one year after the specific date of purchase for both private and commercial users. This one year warranty will only be valid for the original purchaser of the vehicle, and the warranty will not be transferrable to succeeding purchasers.

Replacement Parts

Bad Boy Mowers UTV dealers will repair or replace, at Bad Boy Inc's option, any defective part during the one year warranty period. The parts, to be warranted, must be defective in material and/or workmanship. All replacement parts must be obtained from Bad Boy, Inc.

Battery Warranty

The batteries used to power the Bad Boy Mowers UTV will carry a one year, free replacement warranty. These warranty claims will be handled by the manufacturer, Interstate Battery.

Exclusions

This warranty does not cover defects caused by depreciation or damage caused by normal wear, accidents, improper maintenance, improper use or abuse of the product, or failure to follow the instructions contained in any owner's manual for operation and maintenance. Some specific exclusions include but are not limited to: light bulbs, wheels, tires, brakes, cv boots or upholstery.

Responsibility of the Customer

It is the responsibility of the customer to register his/her machine for warranty by promptly returning a completed warranty registration card within 30 days from the date of purchase. Also, the customer must operate and maintain his/her machine within the proper guidelines of the owner's manual.

This warranty gives you specific legal rights, and you may also have other rights, which may vary from state to state.

Any warranty issues that arise can be handled by your Bad Boy UTV/LSV dealer or at:
Bad Boy, Inc 102 Industrial Drive Batesville, AR 72501 (866) 622-3269

VEHICLE IDENTIFICATION NUMBERS

Record your vehicle's identification numbers in the spaces provided.

Vehicle Model Number: _____

Frame VIN: _____

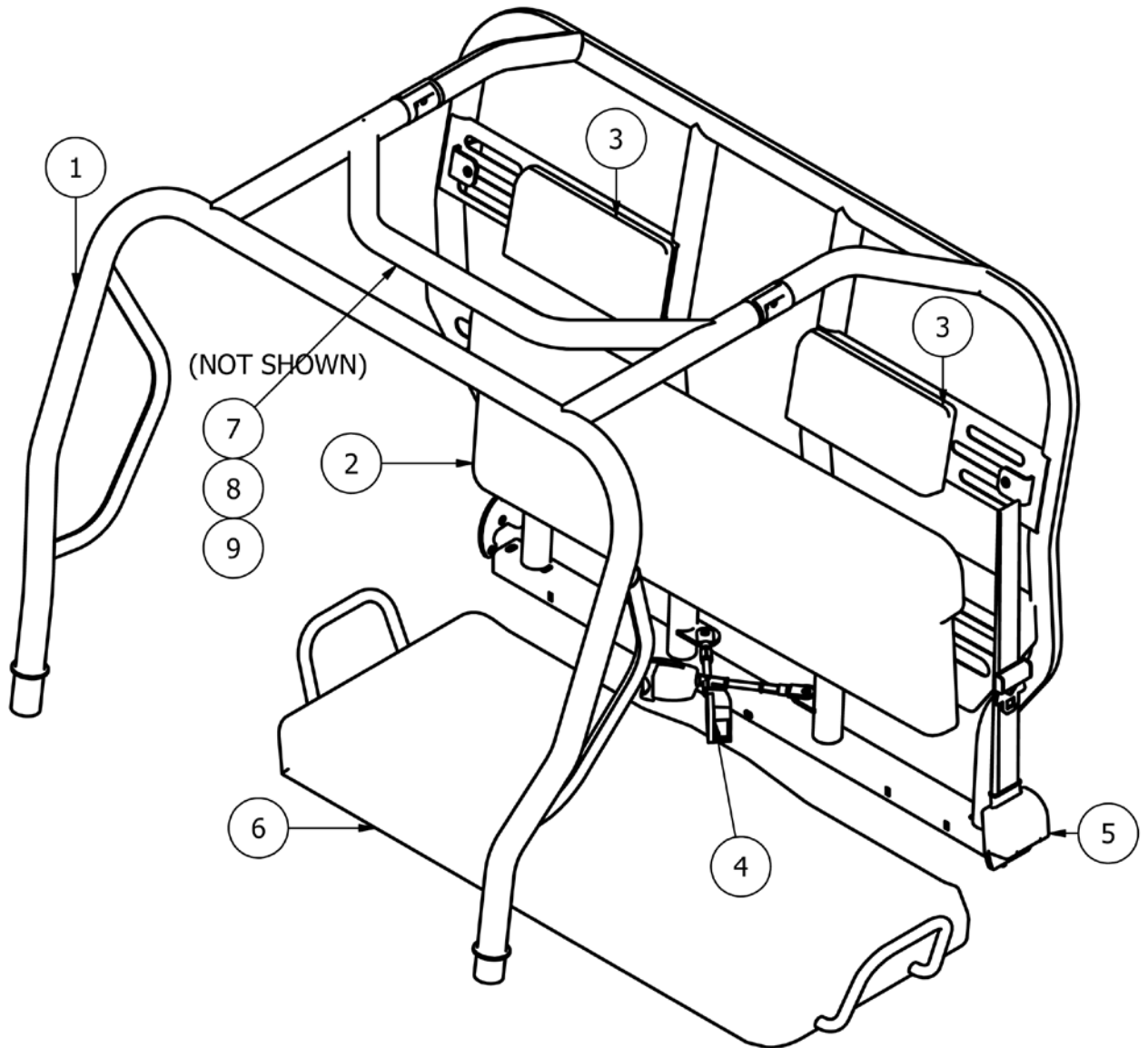
Motor Serial Number _____

MAINTENANCE LOG			
DATE	MILES/ HOURS	TECHNICIAN	SERVICE PERFORMED

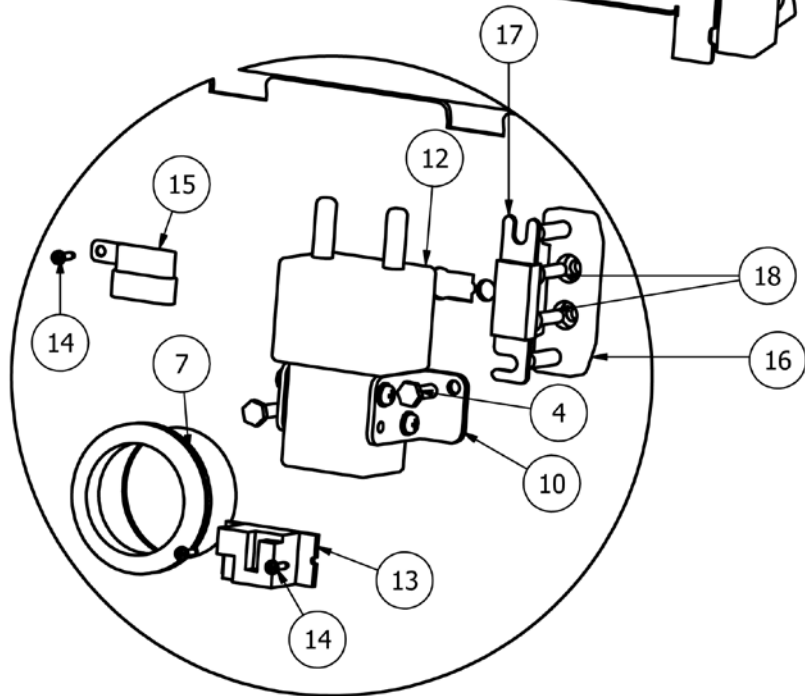
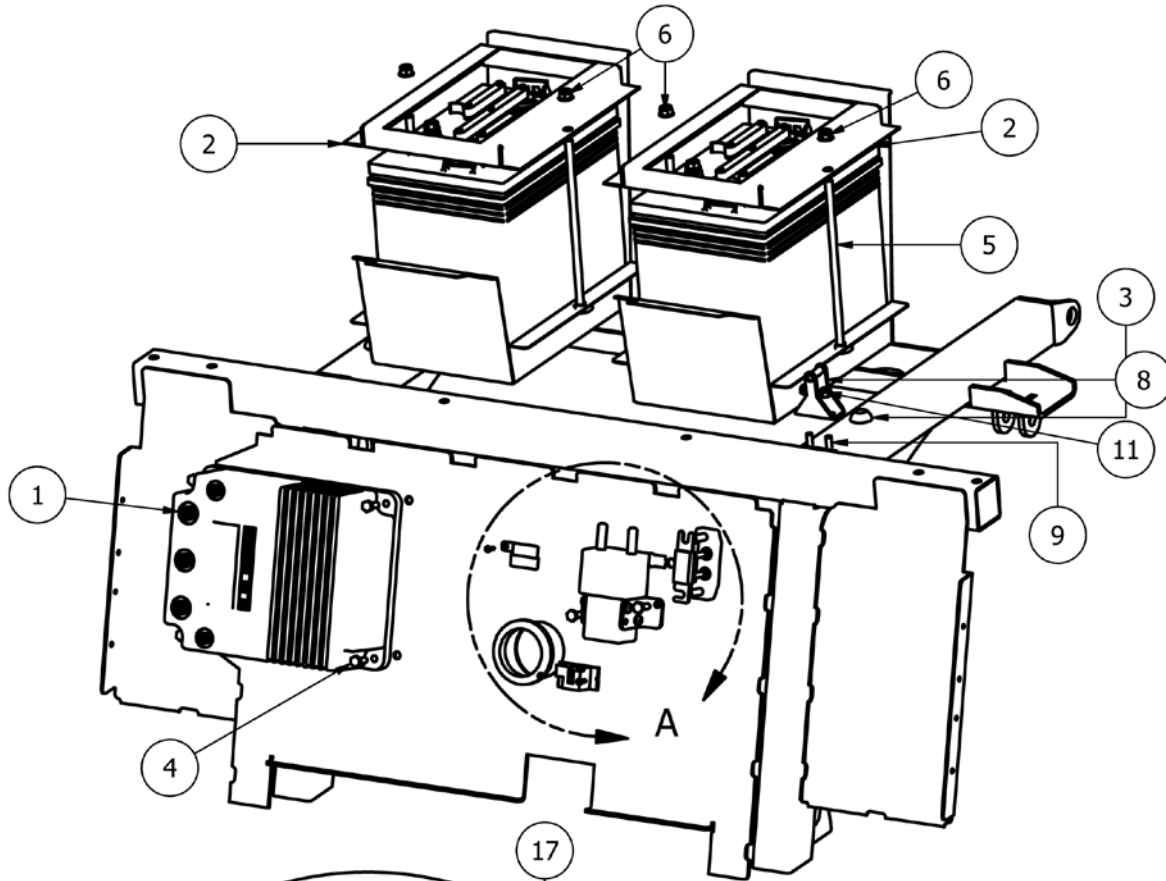
PARTS MANUAL 1500E BRUSHLESS ELECTRIC

Table of Contents

Roll Cage Assembly	31
Rear Battery Holder	32-33
Dashboard Assembly	34
Seat Frame Assembly	35
Bed Assembly	36-37
Frame Front Frame Assembly	38-39
Hood & Bumper Assembly	40
Rear Axle Assembly	41
Driver Compartment Assembly	42-43
Rear Frame Assembly	44

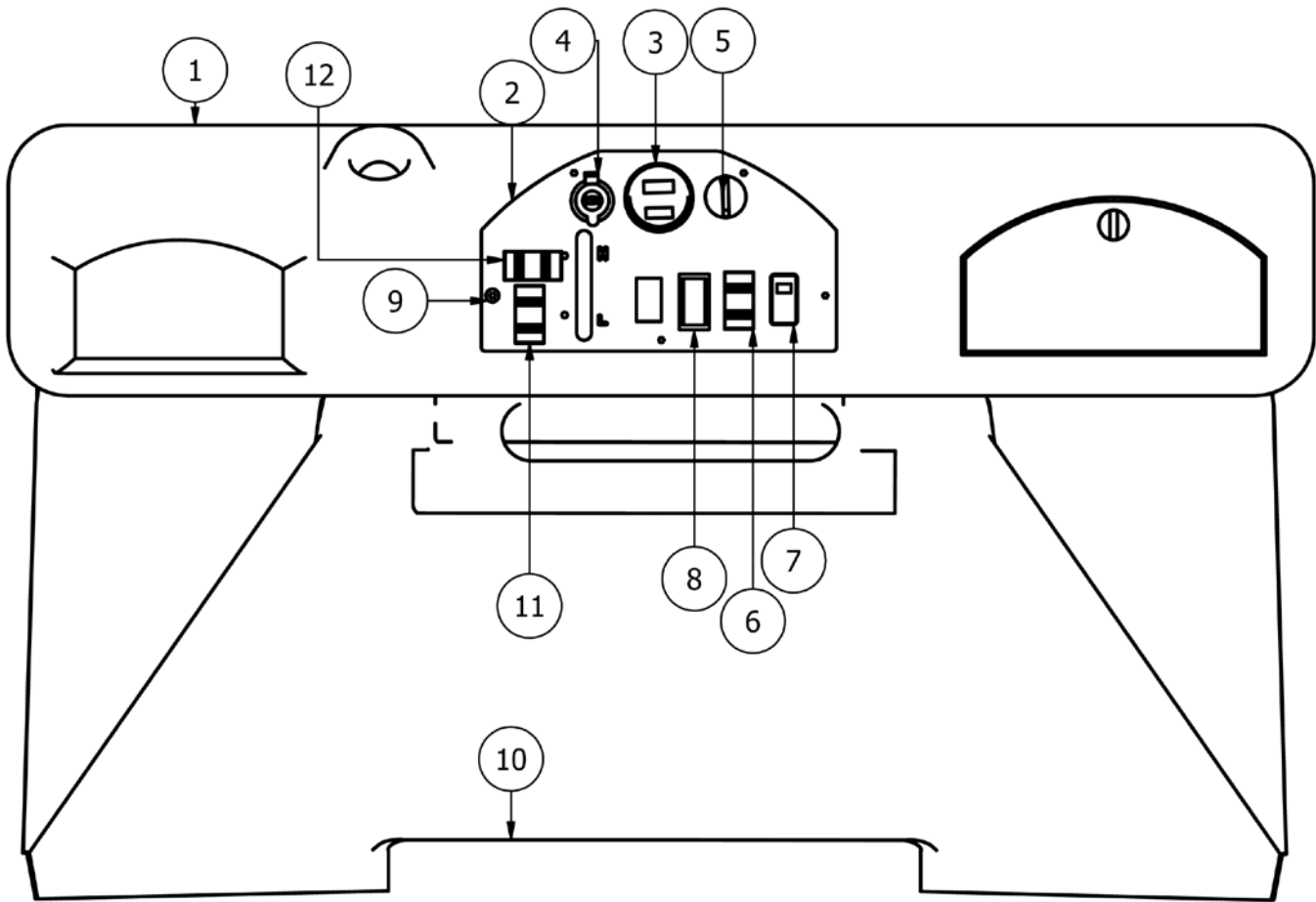


Parts List			
ITEM	QTY	PART NUMBER	DESCRIPTION
1	1	680-2013-00	Roll Cage-2 Passenger-2012
2	1	671-1050-00	Bench Seat Back
3	2	671-1055-00	Seat Headrest
4	2	671-0030-00	Seat Belt Latch
5	1	639-0082-00	Three pt. seatbelt tab
6	1	671-1000-00	Seat Bottom
7	1	693-3524-00	LSV DOT Windshield Assy
8	1	693-3528-00	Dash Console-2011 W/CUP HOLD
9	1	693-3515-00	HARD TOP (2 PASSENGER)

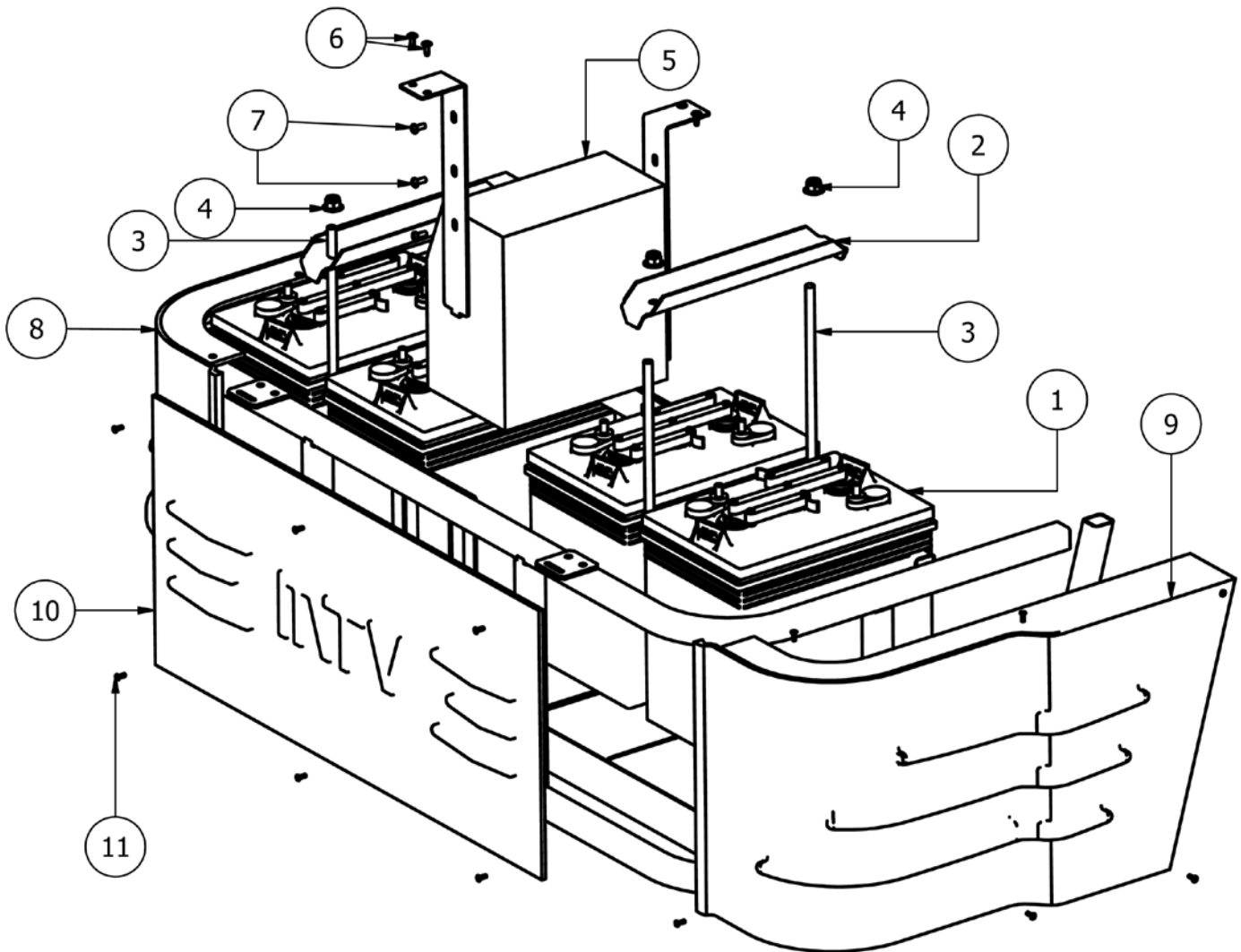


DETAIL A

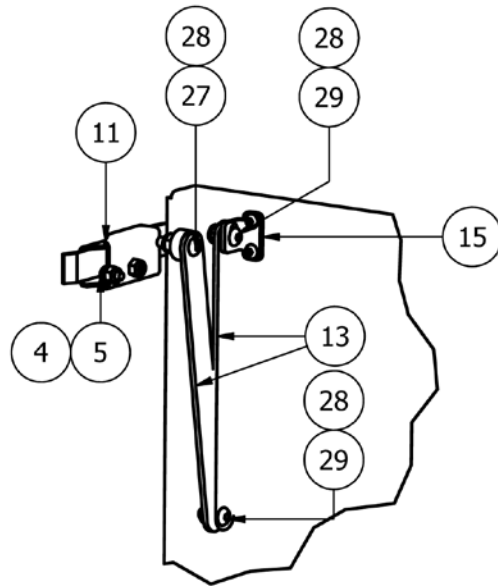
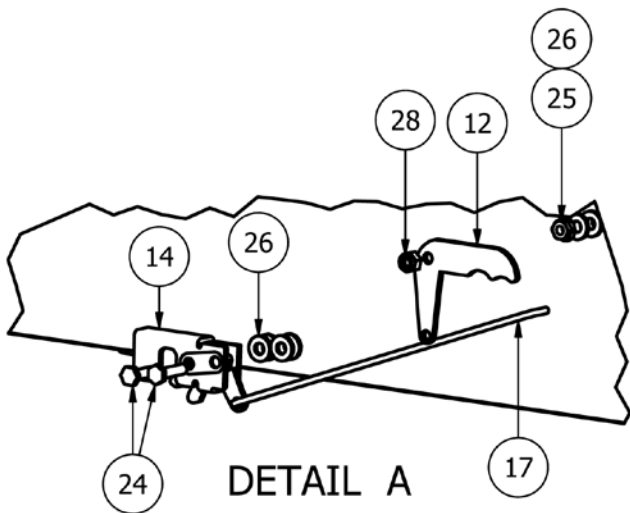
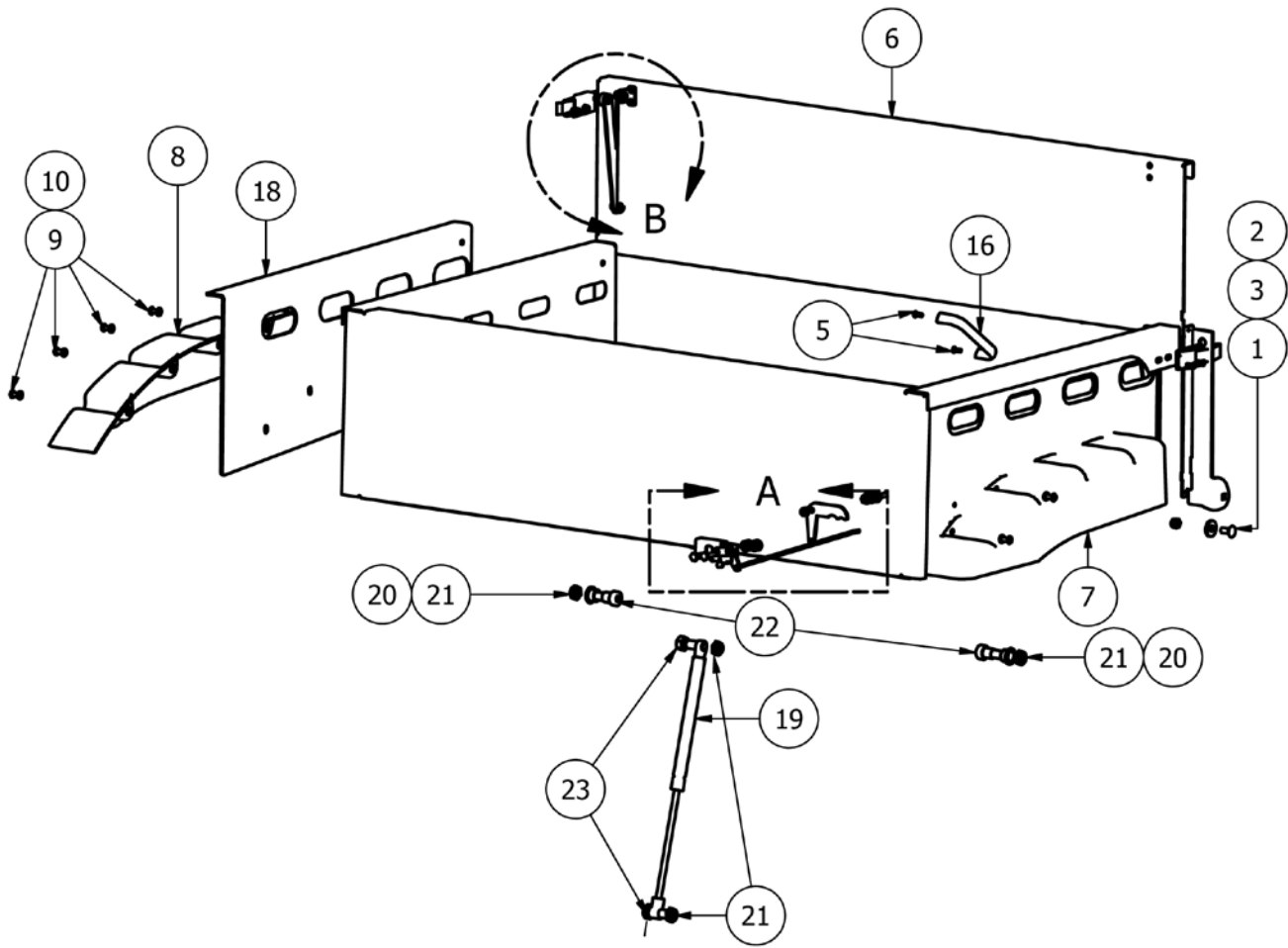
Parts List			
ITEM	QTY	PART NUMBER	DESCRIPTION
1	1	615-3002-00	Curtis Speed Controller
2	2	657-0020-00	Rear Battery Holder
3	2	629-4010-00	15/16 DIA Recessed Bumper Rubber BLK
4	6	618-8052-00	1/4-20 x 3/4 Grade 5 Hex bolts Zinc
5	4	618-2056-00	5/16 -18x8 Carriage Bolt Zinc
6	4	613-8049-00	5/16-18 Nylon Insert Flange Nut Zinc Orange Nylon
7	1	619-0020-00	Rubber Grammet-Rear Fire Wall
8	1	639-6000-00	Bed Latch Post Assembly
9	2	618-2045-00	1/4-20 x0201/2 Carriage Bolt
10	2	639-1005-00	Solenoid Bracket Curtis 2991
11	2	613-8073-00	1/4-20 Nylon Insert Locknut Zinc Orange Nylon
12	1	715-1080-00	Starter Solenoid
13	1	686-1201-00	12 Volt Relay
14	3	630-2015-00	6-32 x 1/2 Pan Phillips Head
15	1	677-2075-00	12 Volt Auxillary Plug
16	1	668-3010-00	500 Amp Fuse Mounting Block
17	1	668-3000-00	Fast Acting Fuse-500 Amp
18	2	618-2037-50	1/4-20 X1 Button Socket C/S 1



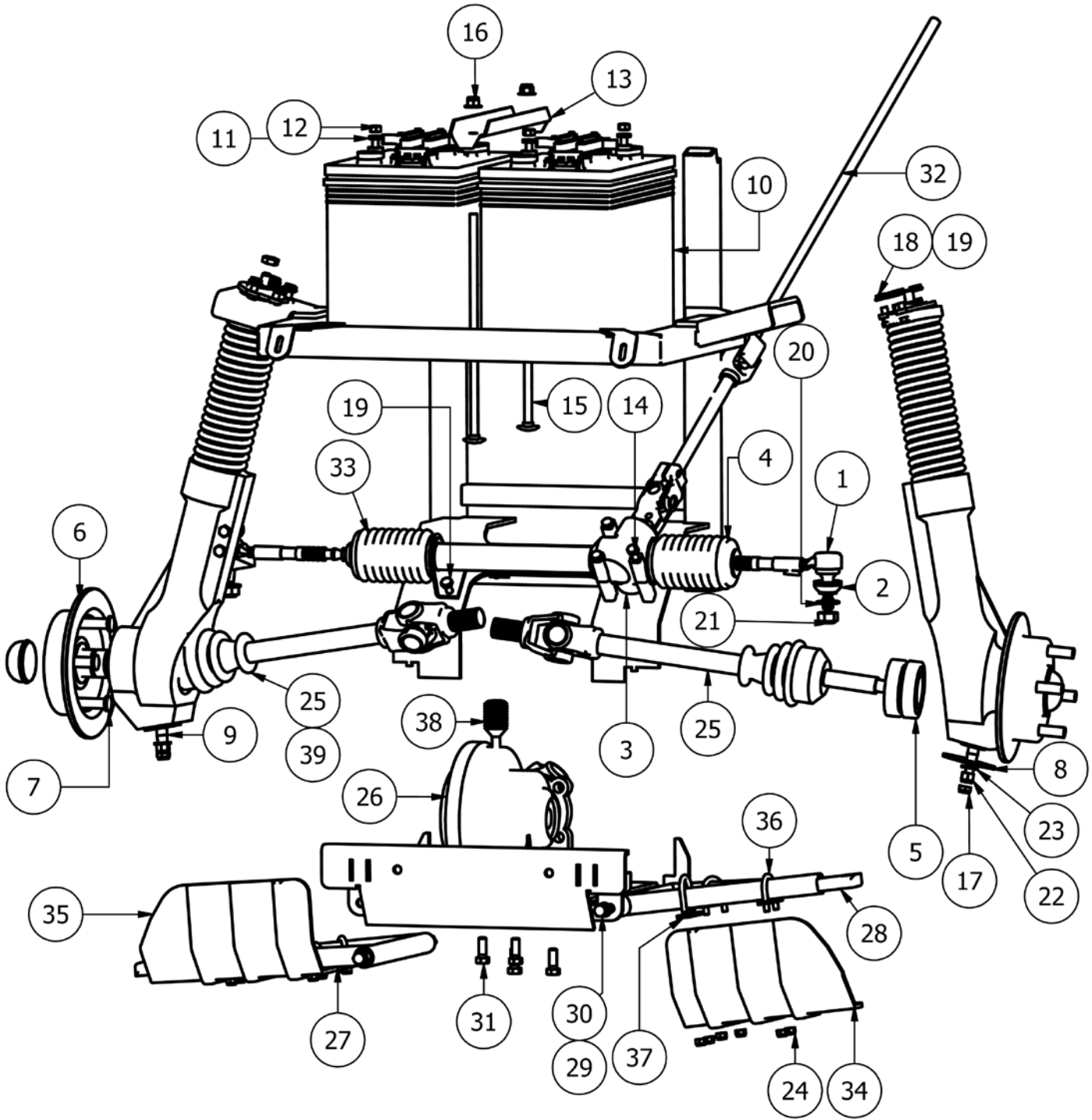
Parts List			
ITEM	QTY	PART NUMBER	DESCRIPTION
1	1	679-5000-00	Plastic Dash - 2011
2	1	679-3050-00	Dash Panel-MTV?LSV-2011
3	1	686-0001-00	Battery Fuel Gauge
4	1	677-2075-00	12 Volt Auxilliary Plug
5	1	677-4001-00	Key-Electric MTV
6	1	677-2050-00	Light Switch
7	1	677-2000-00	4WD Switch
8	1	677-1000-00	Forward/Reverse Switch
9	5	618-2037-50	1/4-20 X1 Button Socket C/S 1
10	1	779-1022-00	Fire Wall Plastic
11	1	676-1020-00	Horn Switch-ORIGINAL
12	1	677-1001-00	Turn Signal Switch-ORIGINAL



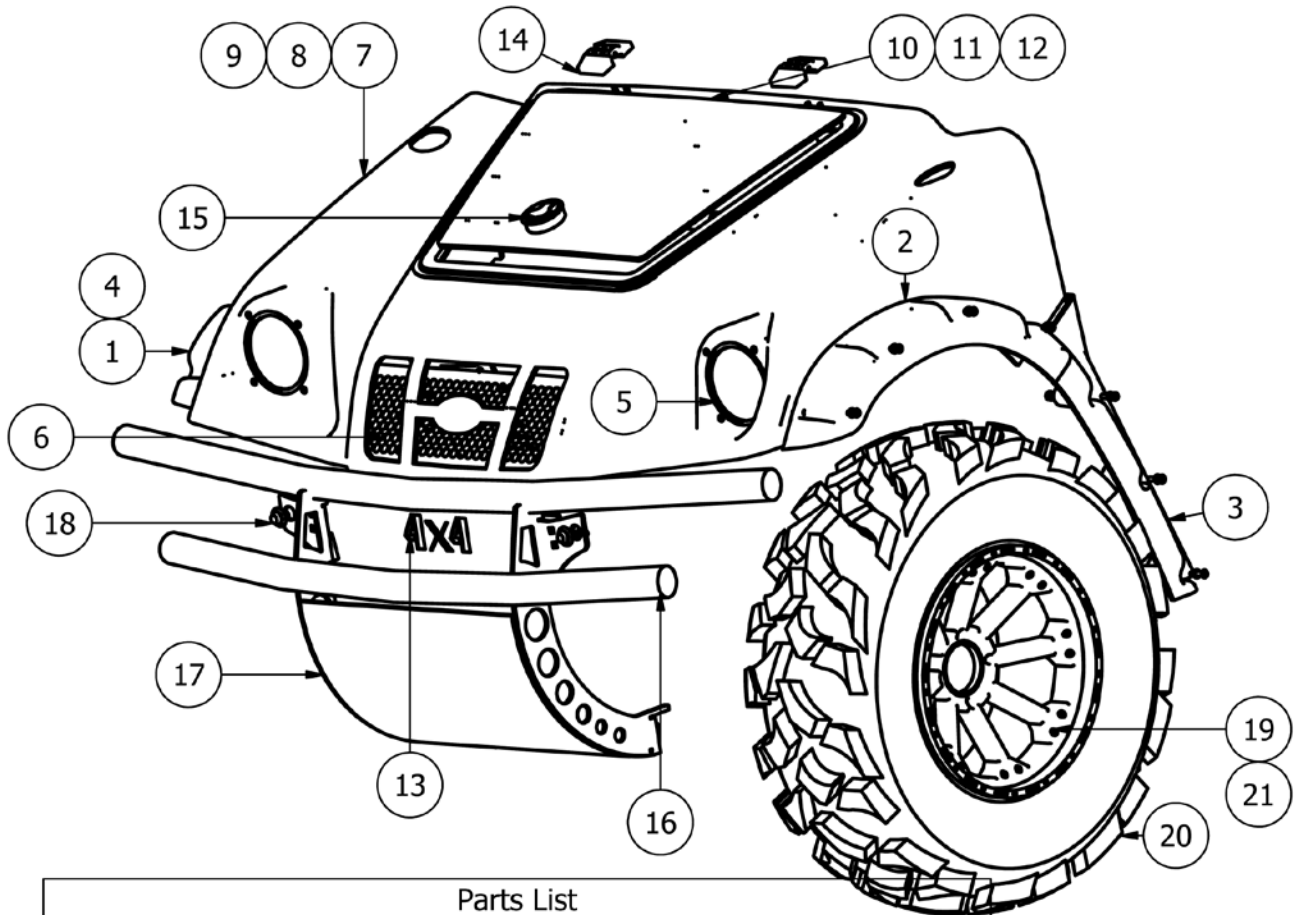
Parts List			
ITEM	QTY	PART NUMBER	DESCRIPTION
1	4	668-2050-00	6 Volt Battery
2	2	657-0001-00	Battery Holder Front/Middle
3	4	618-2010-00	3/8 -16x11 Carriage Bolt
4	4	613-5202-00	3/8-16 Nylock Flange Nut
5	1	668-1050-00	18A, 48V Charger (Dual Pro)
6	4	630-2020-00	8-32 x 1/2 Phillips Machine Sc
7	6	630-2010-00	10-24 x 1/2 Pan Phillips Head
8	1	680-1000-00	Seat Frame Cover Right Orange
9	1	680-1010-00	Left Seat Frame Cover Orange
10	1	680-0050-00	Center Seat Frame Cover Orange
11	18	618-2039-00	1/8 Rivet



Parts List			
ITEM	QTY	PART NUMBER	DESCRIPTION
1	2	618-8062-00	5/16-18x3/4 Carriage Bolts Zinc
2	2	613-8047-00	5/16-18 Nylon Insert Locknut Zinc Orange Nylon
3	2	019-6042-00	.360ID Plastic Washer
4	4	013-5019-00	10-24 Nylon Insert Locknut Zinc Orange Nylon
5	6	618-8056-00	10-24 x 1/2 Button Socket C/S 18-8 SS
6	1	660-0010-00	Orange Tailgate
7	1	674-1080-00	Bed Fender Top Left
8	1	674-1075-00	Bed Fender Top Right
9	8	618-8064-00	1/4-20 x 5/8 Buttonhead Socket C/S 18-8 SS
10	8	019-7040-00	1/1 USS Flat Washer Zinc
11	2	652-2005-00	Tailgate Latch
12	1	726-7000-00	Dump Bed Actuator Lever
13	4	739-4000-00	Tilgate Support Arm
14	1	652-6010-00	Bed Rotary Latch
15	1	739-4002-00	Tailgate Support Bracket-Right
16	1	769-1000-00	Bed Handle
17	1	635-7000-00	Bed Latch Push Rod- Std Bed
18	1	679-0010-00	Bed Panel Insert Left
19	1	635-7035-00	Dump Bed Gas Assist
20	2	632-5052-00	Bronze Bushing
21	4	613-0040-00	1/2-13 Nylon Insert Jam Locknut Zinc Orange Zinc
22	2	618-3001-00	5/8 x 5/8 Socket Shoulder Bolt
23	2	618-5050-00	1/2" x 1-1/4" Hex Bolt
24	2	618-4007-00	1/4-20 x 3/4 Grade 5 Hex bolts Zinc
25	3	613-9001-00	1/4-20 Hex Flange Nuts Zinc W/Serrations
26	6	619-0010-00	1/4 USS Flat Washer 18-8 SS
27	3	618-2037-50	1/4-20 X1 Button Socket C/S 1
28	11	613-8073-50	1/4-20 Nylon Insert Locknut BL
29	4	618-8064-50	1/4-20 x 5/8 Button Socket C/S

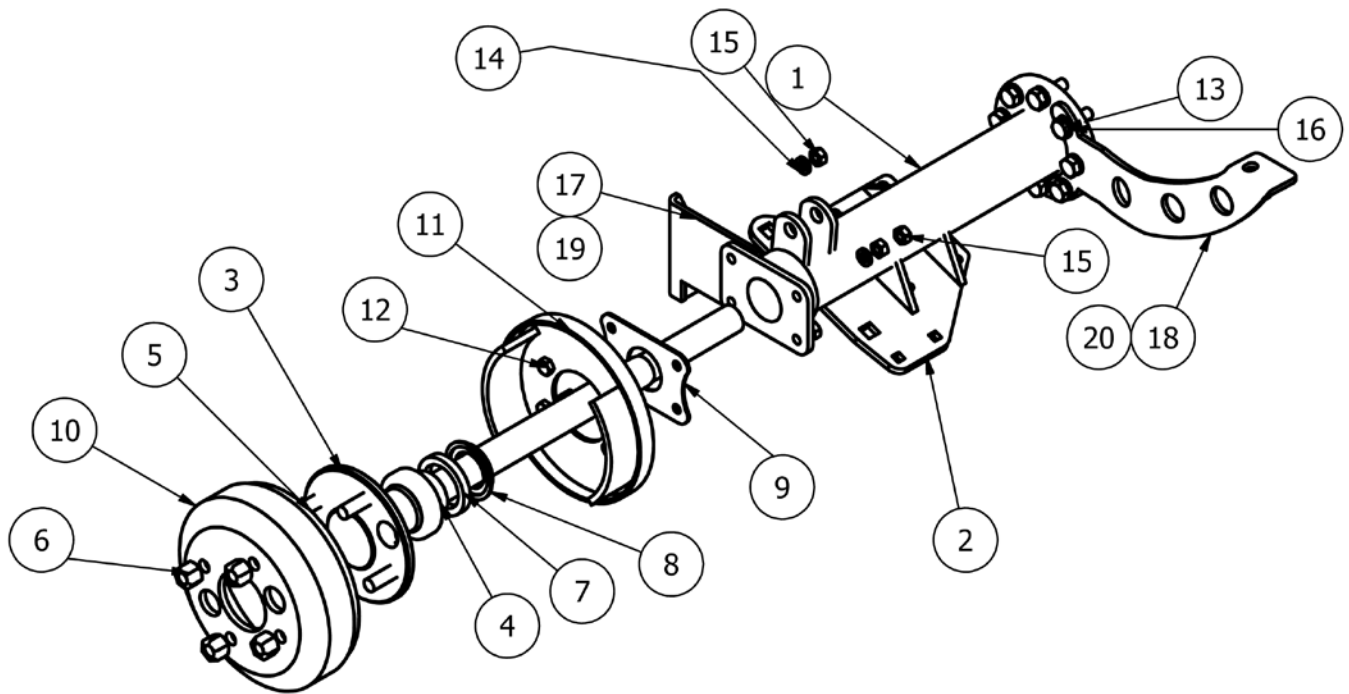


Parts List			
ITEM	QTY	PART NUMBER	DESCRIPTION
1	2	637-1052-00	Tie Rod End- Frap
2	2	699-5010-00	Tie Rod Boot
3	1	637-1050-00	Rack and Pinion Steering Unit
4	1	636-1000-00	R&P Boot Kit, Driver Side
5	4	610-1010-00	Front Strut Wheel Bearing
6	2	616-2000-00	H4x475 with Disc Hub
7	8	687-1060-00	Rotor Stud
8	2	699-5005-00	Retaining Plate
9	2	699-5000-00	Lower Ball Joint-Strut
10	8	668-2050-00	6 Volt Battery
11	8	619-0023-00	5/16 Lock Washer 18-8 SS
12	20	613-8043-00	5/16-18 Hex Nuts Zinc
13	3	657-0001-00	Battery Holder Front/Middle
14	3	618-2060-00	5/16-18 X 3 1/2 GR 5 Hex Bolts Zinc
15	6	618-2010-00	3/8 -16x11 Carriage Bolt
16	6	613-5202-00	3/8-16 Nylock Flange Nut
17	3	618-4011-00	3/8-18 Nylon Insert Locknut Zinc Orange Nylon
18	20	613-9002-00	5/16-18 Hex Flange Nuts Zinc w/Serations
19	13	618-8063-00	5/16-18 x 3/4 GR 5 Hex bolt Zinc
20	3	619-1050-00	5/8 USS Flat Washer GR8
21	3	613-7021-00	5/8-11 Nylon Insert Locknut Zinc Orange Nylon
22	2	613-5041-00	3/8-16 Nylon Insert Locknut Zinc Orange Nylon
23	2	619-5029-00	3/8 USS Flat Washer Zinc
24	24	613-8073-00	1/4-20 Nylon Insert Locknut Zinc Orange Nylon
25	2	637-3000-00	Half-Shaft
26	1	615-4000-00	Hilliard Differential
27	2	637-2050-00	Lower Control Arm-Right
28	2	637-2051-00	Lower Control Arm-Left
29	4	619-5037-00	3/8 Lockwasher Zinc
30	4	618-5040-00	3/8-16 x 1-1/4 Hex Bolt GR5
31	6	618-6049-00	3/8-16 X 1 GR 5 Hex Bolts Zinc
32	1	637-0050-00	Steering Shaft Assembly
33	1	636-1005-00	R&P Boot Kit, Passenger Side
34	1	659-2600-00	Left A-Arm Cover Plastic
35	1	659-2605-00	Right A-Arm Cover Plastic
36	6	618-1050-00	1/4-20x1-1/8 BLx1-1/2 LL U Bolt
37	6	626-1000-00	A-Arm Guard U-Bolt Plante
38	1	615-4050-00	Case Breather Accordion Tube
39	1	612-1000-00	Half Shaft Boot Kit

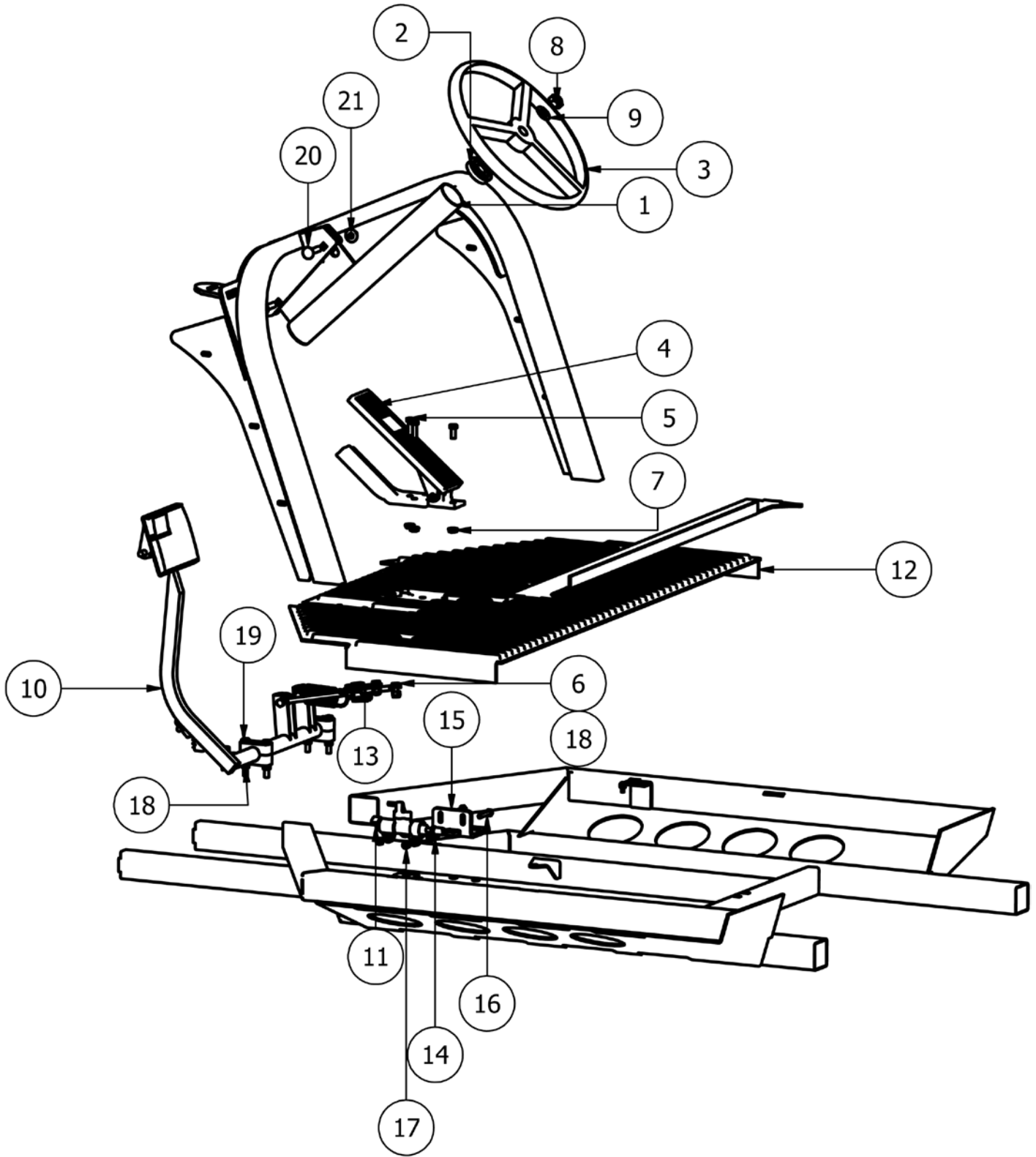


Parts List

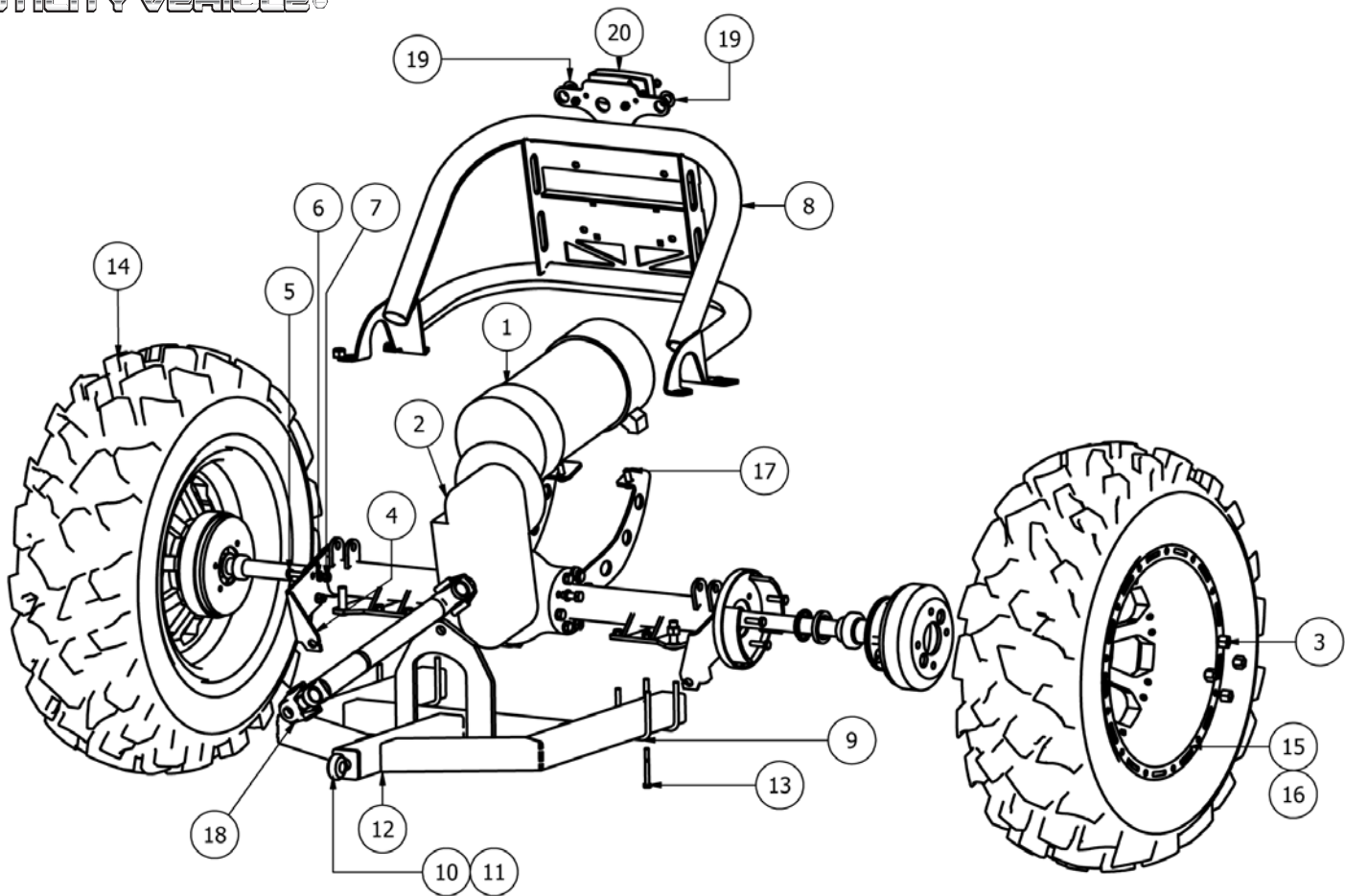
ITEM	QTY	PART NUMBER	DESCRIPTION
1	1	675-1075-00	Front Right Fender Flare
2	1	675-1000-00	Front Left Fender Flare
3	1	675-1050-00	production hood flare right extension
4	1	675-1055-00	Production hood Flare left extension
5	2	688-1000-00	UV Headlight
6	1	602-1010-00	Front Grill
7	1	659-1000-00	Orange Hood
8	1	659-1000-10	Black Hood
9	1	659-1000-50	Camo Hood
10	1	659-2000-00	Hood Hatch Door (Orange)
11	1	659-2000-10	Black hood Hatch
12	1	659-2000-50	Camo Hood Hatch
13	1	614-2110-20	Brush Guard Insert Flat Black
14	4	653-5010-00	Hood Hinge
15	1	652-5000-00	Hood Latch
16	1	614-3410-00	1-3/4" Round Tubing Plug
17	1	614-2100-00	Brush Guard
18	2	688-1002-00	Front Turn Signal (Amber)
19	1	622-5000-00	Front Wheel - Aluminum 12 Inch
20	1	622-5075-00	25x8 R12 Bounty Hunter Tire
21	1	622-5001-00	Front Wheel-Steel 12 Inch



Parts List			
ITEM	QTY	PART NUMBER	DESCRIPTION
1	1	665-1000-00	Rear Axle Housing
2	1	626-0020-00	Rear End Plate
3	1	665-1010-00	Rear Axle
4	1	610-1015-00	Rear Axle Bearing
5	4	616-2010-00	Rear Drum Stud
6	4	613-0050-00	M12-0.25 Rear Lug Nut
7	1	625-2020-00	Axle Spacer
8	1	625-2025-00	Bearing Retainer Collar
9	1	626-2500-00	Axle Retaining Plate
10	1	692-0050-00	Brake Drum
11	1	692-0055-00	Brake Backing Plate
12	4	618-5321-00	M8 1.25 x 20 Bolt
13	8	618-2070-00	M10x1.5x30 Hex Bolt
14	4	619-0058-00	M8 Lockwasher Zinc
15	6	613-8043-00	5/16-18 Hex Nuts Zinc
16	8	619-2020-00	M10 Lock Washer
17	1	639-0031-00	Rear Cable Bracket Left
18	1	639-1202-00	Brushless Motor Mount-Left
19	1	639-0030-00	Rear Cable Bracket Right
20	1	639-1200-00	Brushless Motor Mount-Right



Parts List			
ITEM	QTY	PART NUMBER	DESCRIPTION
1	1	603-3000-10	Steering Tube
2	2	610-2000-00	Steering Column Bearing
3	1	622-0001-00	Steering Wheel & Cap
4	1	755-1000-00	Accelerator Pedal
5	2	618-8065-00	5/16-18 x 1 Hex Bolt Zinc
6	5	618-8063-00	5/16-18 x 3/4 GR 5 Hex bolt Zinc
7	3	613-9002-00	5/16-18 Hex Flange Nuts Zinc w/Serations
8	1	613-7021-00	5/8-11 Nylon Insert Locknut Zinc Orange Nylon
9	1	619-1050-00	5/8 USS Flat Washer GR8
10	1	669-1000-00	Brake Pedal Assembly
11	1	716-1000-00	Master Cylinder
12	1	613-5000-00	Front Floor Board Electric
13	2	639-0021-00	Brake Bracket
14	2	625-1000-00	Spacer-75 OD x.375 x.50
15	1	639-0026-00	Master Cylinder Mounting Bracket
16	2	618-5005-00	1/4-20 x 1-1/2 Grade 5 Hex bolts Zinc
17	4	613-8073-00	1/4-20 Nylon Insert Locknut Zinc Orange Nylon
18	10	613-8047-00	5/16-18 Nylon Insert Locknut Zinc Orange Nylon
19	5	018-5344-00	5/16 x 2 1/2 Bolt
20	2	619-0009-00	3/8 x 1 3/4 Carrage Bolt
21	2	613-5201-00	3/8-16 Serrated Flange Nut



Parts List

ITEM	QTY	PART NUMBER	DESCRIPTION
1	1	615-2020-10	AC Motor-Extended Frame
2	1	637-0003-00	2 Speed Rear Axle
3	8	613-0050-00	M12-0.25 Rear Lug Nut
4	1	639-0030-00	Rear Brake Cable Bracket Right
5	8	618-5321-00	M8 1.25 x 20 Bolt
6	8	619-0058-00	M8 Lockwasher Zinc
7	12	613-8043-00	5/16-18 Hex Nuts Zinc
8	1	629-1050-30	Rear Bumper Assy - 2011
9	4	618-1000-00	5/16-18x2 BL x 3 LL SQ Bend U-Bolt GR 8 Zinc
10	1	648-7000-00	Swing arm Heim joint
11	1	648-7005-00	Swing Arm Heim-4 Passenger
12	2	603-1031-00	30"x2"60deg
13	2	618-1075-00	1/4-20 x 2 1/2 Hex Bolt
14	2	722-2050-00	Rear Tire
15	2	622-5050-00	Rear Wheel - Aluminum 12 Inch
16	2	622-5051-00	Rear Wheel-Steel 12 Inch
17	2	618-6049-00	3/8-16 X 1 GR 5 Hex Bolts Zinc
18	4	637-2000-00	6E Telescoping Drive Shaft
19	2	688-1003-00	Rear Turn Signal (Red)
20	1	688-1001-00	Tail/Brake Light Assembly

NOTES: _____

NOTES: _____

BAD BOY MOWERS UTILITY VEHICLE OWNERS REGISTRATION & TRAINING CERTIFICATE

(Keep original copy on file at your dealership)

VIN/PIN_____

MODEL_____

DATE OF PURCHASE_____ DEALER_____

PURCHASER LAST NAME_____ FIRST NAME_____

ADDRESS_____

CITY_____ STATE_____ POSTAL CODE_____

DAY PHONE_____ EVENING PHONE_____

Safety Check List

Purchaser: By initialing each line, I understand and give my word of Honor

_____ This Utility Vehicle must not be operated by anyone under the age indicated in the Operator's manual. I will not allow anyone under the age indicated in the Operator's manual to operate this vehicle. Every operator must read and understand the Operator's manual before riding this Utility Vehicle.

_____ This Utility Vehicle must not be operated by anyone who does not have a valid driver's license.

_____ Never ride an Utility Vehicle after consuming alcohol or drugs.

_____ Overly aggressive use on inclines may cause the Utility Vehicle to flip over.

_____ Always ride within your abilities.

_____ Never attempt jumps or other stunts.

_____ Always be extra careful when riding on unfamiliar terrain, steep slopes, or when encountering obstacles.

_____ I have read the above warnings, and I understand that SEVERE INJURY OR DEATH can result from ignoring these warnings or from improper use.

_____ I will watch the safety/training video provided by Bad Boy Mowers before operating this vehicle.

Purchaser's Signature

Date

I have reviewed the safety features and Operator's Manual with this purchaser and to all appropriate immediate family members prior to their taking delivery of this UTV and qualifying them for warranty. The UTV described above has been serviced and approved for delivery by me or an employee on my behalf. I will maintain this Owner Registration Form from the customer and me in a paper form along with other books and records of the dealership.

Authorized Dealership Signature

Date

BAD BOY, INC.

102 INDUSTRIAL DRIVE
BATESVILLE, AR 72501

1.866.622.3269

www.badboymowers.com

Technical Support:

David Watts

Randel Davis randel.davis@badboymowers.com

Jake Reed jake.reed@badboymowers.com

Warranty:

Dustin Tissiere dustin@badboymowers.com

Bill Hurst bill@badboymowers.com

Nathan Simmons

Parts:

Jake Reed jake.reed@badboymowers.com



Bad Boy, Inc.
102 Industrial Drive
Batesville, Arkansas 72501
(870) 698-0090