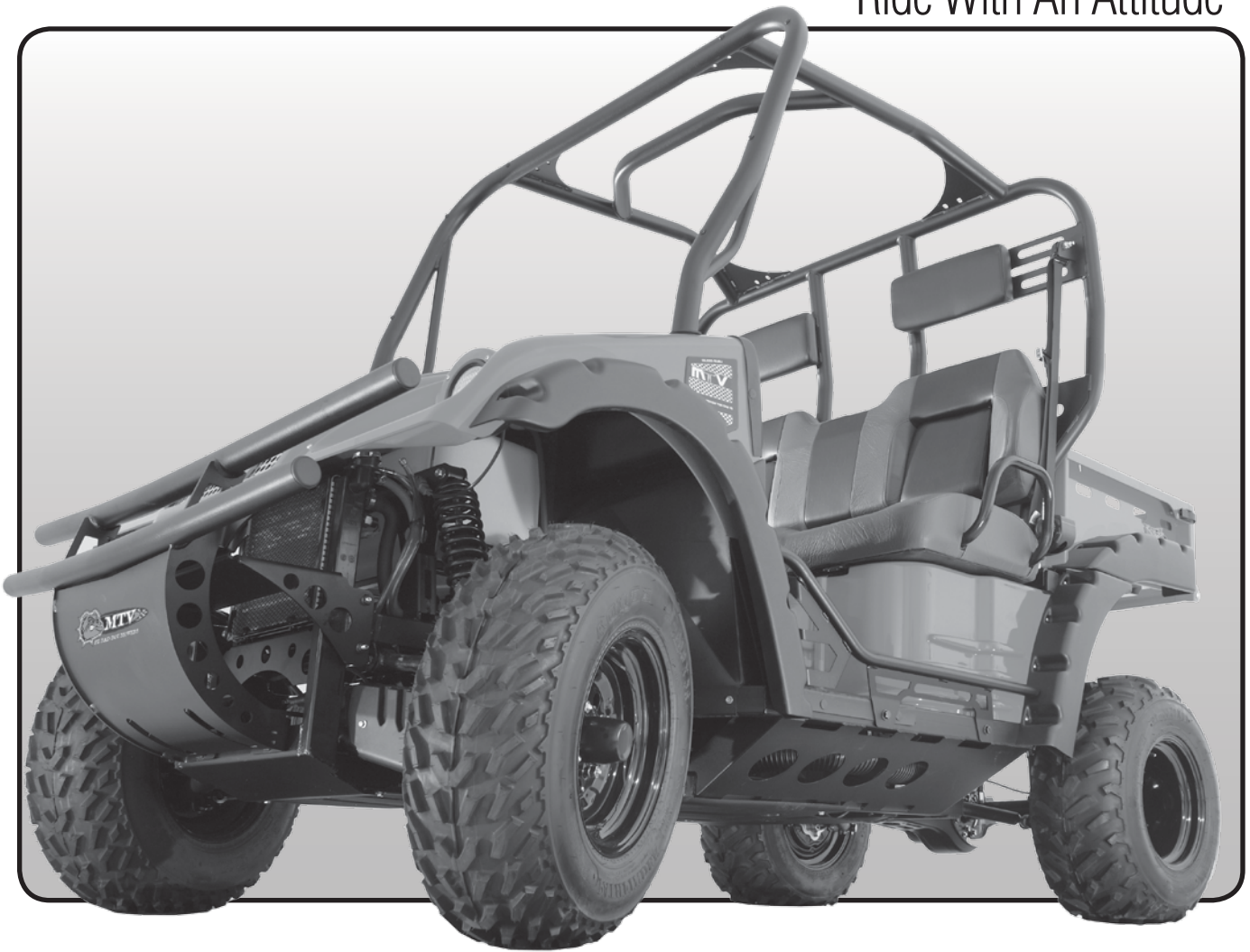


Ride With An Attitude



MODEL 1500G OWNER'S & PARTS MANUAL

For additional information, please see us at
www.badboymowers.com

Bad Boy, Inc.
102 Industrial Drive
Batesville, Arkansas 72501
(870) 698-0090





MTV OWNER'S MANUAL GAS-POWERED 2011 Edition

Table of Contents

General Safety 3

Specifications 4–5

Important Identification Numbers 5

Starting/Operating Procedure 6

Periodical Maintenance Schedule 6–9

Basic Safety Rules 10

Service Record 11

PARTS LIST 13

OWNER'S REGISTRATION & TRAINING CERTIFICATE 33

DEAR CUSTOMER:

Our MTV is manufactured under strict quality control systems. The Warranty document sent to dealers guarantees all written items. Given that you follow the maintenance procedure by using original parts and riding normally, we will repair or replace any components found to be defective.

This warranty is not valid if the following occurs:

- Using unspecified Engine Oil.
- Improper maintenance or repairs.
- Using non-original or modified accessories and parts.
- Improper Operation or evidence of abuse.
- Normal wear and tear items are not covered—Seat, Spark Plug, Bulbs, Filters, Brakes, Belt, Chain, Tires, etc.

***This manual is a simple introduction of operation and basic maintenance.
If you have additional questions, contact your dealer for assistance.***

OWNER MEMO

Name: _____

Purchasing Date: _____

Type: _____

Pin Number: _____

Special Note: _____

IGNITION KEY

Your key is a series type key, of which there are a high range of numbers. It is highly recommended that you obtain additional copies of your key. If all keys are lost, a replacement ignition switch must be installed.

OWNER'S REGISTRATION AND TRAINING CERTIFICATE

PRINTED ON **PAGE 33**, MUST BE FILLED OUT AND SIGNED BY PURCHASER AND DEALER.

GENERAL SAFETY

Carbon Monoxide

When running your engine, ensure the place is well ventilated. Never run your engine in a closed area. Run your engine in an open area, if you have to run your engine in a closed area, be sure to use an exhaust fan.

Caution

Exhaust contains toxic gas which may cause one to lose consciousness and even result in death.

Gasoline

Gasoline has a low ignition point and is an explosive material. Work in a well-ventilated place, no flame or spark should be allowed in the work place or where gasoline is being stored.

Used Engine Oil

Prolonged contact with used engine oil (or transmission oil) may cause skin cancer although it may not be verified. We recommend that you wash your hands with soap and water right after coming in contact with used oil. Keep used oil beyond reach of children.

Hot Components

Components of the engine and exhaust system can become extremely hot after engine running. They remain very hot even after the engine has been stopped for some time. When performing service work on these parts, wear insulated gloves and wait until cooling off.

Battery

The Battery emits explosive gases; flame is strictly prohibited. Keep your work area well ventilated when charging the battery. The Battery contains sulfuric acid (electrolyte) which can cause serious burns, so be careful not to make contact with your eyes or skin. If you get battery acid on your skin, wash it off immediately with water. If you get battery acid in your eyes, flush it out immediately with water and then see a doctor.

Keep electrolyte beyond reach of children.

Brake Dust

Do not use an air hose or a dry brush to clean components of the brake system: use a vacuum cleaner or equivalent to avoid dust flying. Inhaling brake dust has been known to cause breathing disorders or cancer.

Brake Fluid

Brake fluid is hygroscopic which means it absorbs moisture. Moisture inside brake components can cause part deterioration. Spilling brake fluid on painted, plastic or rubber parts may cause damage to the parts. Place a Clean towel on the above-mentioned parts for protection when servicing the brake system. Keep brake fluid beyond reach of children.

BEFORE DRIVING:

- Fuel:** *Check that you have sufficient fuel for your journey.*
- Brakes:** *Check the brakes for operation.*
- Tires:** *Check for proper inflation. Check tires for physical damage.*
- Lighting System:** *Check lights and signaling devices.*
- Engine Oil:** *Check oil level.*

SPECIFICATIONS

Dimensions	Overall Length..... 103 inches
	Overall Width 53 inches
	Overall Height 75 inches
	Wheel Base..... 71.5 inches
Weight	Curb Weight..... 1,125 lbs
	Passengers/Weight Two / 500 lbs
	Cargo Weight..... 400 lbs
	Total Weight..... 2,025 lbs
	Type S.O.H.C
Performance	Max Speed..... 35 to 50 mph depending upon vehicle
Suspension System	Front..... Double A-Arm
	Rear..... 4-Link
Tire Specifications	Front..... 25x8-12
	Rear..... 25x10-12
Brake System	Front Disk (0200mm)
	Rear..... Disk (0220mm)
Transmission Devices	Transfer Shaft drive
	Shift Lever..... L,H,N,R
	Shift Manual lever
	Clutch type..... Wet multi-plate
	Transmission Continuously variable centrifugal type
Engine	Fuel Used..... 87 octane or higher having less than an E15 ethanol rating
	Cycle /cooling..... 4-stroke/ water cooled
	Bore 86 mm
	Cylinder Stroke 69.4 mm
	Number/Arrangement Single Cylinder
	Displacement..... 403.1 cc
	Compression Ratio 9.2:1
	Ignition..... C.D.I.
	Starting System Electrical/Recoil starter
	Air Filtration Paper

Lubrication	Lubrication System.....	Pump Forced Circulation
	Engine Oil.....	Bad Boy MTV Engine Lubricant SAE 10w40
	Lubrication.....	SG/CC
	Engine Oil capacity	3.5L
Gear Lubrication	Differential / Final Reduction device.....	Spec. 90#, Capacity 350 c.c.
Exhaust	Concentration	Solid Particulate
	CO.....	Below 7.0g/km
	HC.....	Below 1.5g/km
	Nox	Below 0.4g/km
	Fuel Capacity	5.0 gal
	Spark Plug	NGK CR7E
	Battery.....	12V 18AH
Lamps	Front Lamps.....	12V 55WX2

IMPORTANT IDENTIFICATION NUMBERS

PIN Number

Record PIN number for future reference. The PIN Number is located on passenger side under seat and on driver's side under hood.

Warning Labels:

Before driving, read these labels thoroughly.

Do not tear off decals. In case of wear or damage, contact your dealer for replacements.

STARTING/OPERATING PROCEDURES

Choke

- Choke Lever is for use in low temperature starting situations. Do not drive the MTV with the choke activated.
- This vehicle is equipped with a safety protection system—to start the engine brake must be applied.
- The MTV will start in any gear when brake is applied. Keep this in mind when starting to prevent injury from movement of the vehicle.
- The MTV fuel system is sensitive and will not allow the vehicle to start if more than 1/8th throttle is applied when cranking.
- For cold weather starting, it is best to start the machine in neutral, with no throttle applied and choke fully engaged.

Brake Pedal

- Before each trip, you need to check the function of the brake pedal. Also check for sufficient brake fluid in the reservoir.
- Attention: Irregularities of the brakes such as leaks and poor performance should only be dealt with by an authorized dealer. The brake fluid level must be above the MIN mark. Always use DOT #4 brake fluid.

Shift Lever

- L: High torque use (advance gear)
- H: Normal use (driving gear)
- N: Parking use (neutral)
- R: Reverse use

Shift Lever Instructions:

- Engage the brake and move the shift lever from N to H, L or R (L shift is used for rough surfaces)
- *When Shifting H to L or any gear/direction the vehicle must be at a complete stop.

Notice: Operating the shift lever when vehicle is moving can be hazardous and can cause damage to the vehicles transmission. This is strictly prohibited. Always wait until the vehicle comes to a complete stop. Do not operate the MTV at high speed in reverse under any circumstances.

2WD/4WD Select Lever

- The 2WD/4WD select lever is used for changing the engine power supplied to the wheels. You can select 2WD or 4WD for your preference according to different surface conditions.
- 2WD: Engages the engine power to the rear wheels only. This is mainly used for normal riding.
- 4WD: Engages the engine power to both front and rear wheels with differential function. There is a limited slip gear assembly inside the front differential that can engage the right and left front wheels at different speeds. This provides much more traction than 2WD and should be used when riding on wet, slippery, or loose surfaces.

GENERAL MAINTENANCE

Recoil Starter

In case the vehicle does not start with the electric starter, the emergency recoil starter can be used to start the engine. To use the recoil starter make sure the headlights are switched off, shift to neutral (N), set the park brake and grip the starter rope-handle, which is on the engine magneto cover. Pull the rope until you feel the starter engage. Pull the rope forcefully to start the engine. At the moment the engine starts, be sure to return the starter rope to its prior normal position.

Tires

The vehicle is equipped with tubeless tires. Tubeless tires should never be repaired. Damaged tires must be replaced immediately. Your authorized dealer should only replace tubeless tires. Since the tire pressure influences the driving ability, the mandatory tire pressure should always be maintained. You should determine outer damages of tires. The suggested minimum profile depth is 3mm; replace the tire immediately if below 3mm. **Tire pressure: 12 PSI**

Check Coolant Reserve Tank

Your MTV comes filled with Extended Life Antifreeze that is red in color. Use only this type when adding coolant. Do not mix antifreeze colors or types. Add coolant to proper level if below the “LOW” mark on the reserve tank.

Caution: The reserve coolant tank level should not be overfilled to allow thermal expansion.

Maintenance Schedule

The below maintenance schedule is established by months and hours and are dependent on whichever comes first. Have your vehicle checked, adjusted and recorded maintenance data by MTV dealer to maintain the MTV at the optimum condition. Use the chart below for necessary service work to keep the vehicle operating at peak performance and economy.

Periodical Maintenance Schedule

Key to table

L: Lubricate C: Clean R: Replace T: Tighten I: Inspection, cleaning and adjustment

ITEM	INTERVAL	25 1	100 3	500 6	1000 12
	HOURS MONTHS				
Muffler Bolts & Exhaust Pipe Nuts		T	T	T	T
Valve Clearance		I		I	I
Air Cleaner		I	R	R	R
Engine Idle RPM		I	I	I	I
Spark Plug				R	R
Engine Oil		R	R	R	R
Front Differential Set Oil		R	R	R	R
Final Gear Oil		R		R	R
C.V.T. Belt				I	R
Fuel Tube			I	I	I
Throttle Cable Play		I	I	I	I
Brakes		I	I	I	I
Brake Hose				I	I
Brake Fluid			I	I	I
Tires			I	I	I
Suspensions				I	I
Steering System		I	I	I	I
Chassis Bolts & Nuts		T	T	T	T
General Lubrications			L	L	L
Grease Nipple (Universal Joint Assembly)			L	L	

Have your MTV serviced and checked by an authorized MTV dealer. Ensure the service book is stamped and signed. Failure to do so could invalidate your warranty. The maintenance schedule is established by taking the monthly/hourly as a reference whichever comes first.

Additional maintenance suggestions:

Clean or replace the air cleaner element more often when the MTV is operated in dusty conditions or in a heavily polluted environment. Maintenance should be performed more often if the MTV is frequently operated in high speed and after the MTV has accumulated a higher mileage.

Preventive maintenance:

Ignition system– perform maintenance and check when continuous abnormal misfire, after-burn or overheating occurs.

Carbon deposit removal – remove carbon deposits in cylinder head, piston and exhaust system when power is obviously lower than normal.

Spark Plug

Recommended spark plug: CR7E.

Installation instructions:

- Remove spark plug cap.
- Clean dirt around the spark plug hole.
- Remove spark plug.
- Measure spark plug gap. Spark plug gap: 0.7-0.8 mm.
- Carefully bend ground electrode of the plug to adjust the gap if necessary.
- Hold spark plug washer and install the spark plug.
- Tighten the plug by turning ½ turn more with plug socket after installed.

Air Cleaner

Installation Instructions:

- Loosen 2 hooks from the air cleaner cover and then remove the cover and then remove the air cleaner.
- Do not clean. Replace as necessary.

Carburetor Idle Speed Adjustment

- Set the parking brake.
- Shift the transmission to neutral.
- Warm up the engine.
- Turn the throttle valve stopper screw to specified idle speed. (Specified idle speed: 1500+ - 100rpm)

Engine Oil

- Pull the MTV on to a flat surface, turn off the engine and engage the parking brake.
- Check the oil level with oil dipstick.
- Do not screw the dipstick into the engine when checking. If oil level is low, fill with recommended oil to upper level.

Instructions for changing:

- Place an oil pan under the MTV and remove oil drain plug.
- After drained, make sure washer can be re-used.
- Install oil drain plug.

Instructions for changing engine oil filter:

- Drain engine oil out.
- Install oil filter.
- Add oil to crankcase (MTV by Bad Boy Engine Lubricant SAE 10w40: part number 785-1030-00)
- Engine oil capacity: 3500/3860c.c
- Install dipstick, run the engine for several minutes.
- Turn off the engine and check oil level again.
- Check for any engine oil leaks.

Differential Oil

Instructions for changing:

- Remove oil filler bolt.
- Remove drain plug and drain gear oil.
- Install the drain plug.
- Make sure that the drain bolt washer can be reused or replaced.
- Add oil to specified quantity.(oil viscosity SAE 80-90#)
- Gear Oil Quantity: 300-350ml.

Fuse and Battery

In order to access the battery or to replace the fuse, you first remove the seat. Under the seat on the driver's side, you will find the fuses.

Note: Only install the correct fuse for replacement. If the fuse should fail several times, you should immediately consult your authorized dealer.

Instructions for installation:

- Lift the seat. You can see the battery. The battery is a sealed type. You can take it to you dealer to check the battery's charge condition periodically. In order to remove the battery, loosen the bolts from the battery clamp then remove the battery. When the battery needs to be recharged, use 1.8A current for 5-10 hours. Maximum charging rate: 9A x 1 hr.

Reversing the battery lead wires can harm your MTV, the battery and/or the charging system.

- When connecting the battery, connect the red wire with the mark (+) and the black wire with the mark (-) of the battery,

Note: connect the red wire (+) first, then the black wire (-).

Disconnect the battery when not in use for long periods of time.

Attention: The maximum power consumption must not exceed 5a.

BASIC SAFETY RULES

- Whoever rides the MTV, must carefully observe the instructions given below.
- Approved safety helmet, boots, goggles, gloves and protective clothing are highly recommended.
- Before getting in the vehicle, make sure the parking brake is on to avoid any injury or damage to the vehicle.
- After starting the engine, remove parking brake, select a gear position, and gradually open the throttle. Make sure that the throttle opens and closes smoothly and the steering wheel steers smoothly in both directions.
- The brakes could get damp when the road is wet. Make sure the brakes function properly before riding.
- If you must ride your vehicle in rainy weather, or on loose surfaces, remember that traction is greatly reduced. Under these conditions, avoid sudden braking which may cause the vehicle to skid.
- When you first receive your vehicle, ensure you have basic driving skills such as going forward, making turns and stopping. Do not attempt any high performance operation until you are very comfortable with your vehicle and your abilities. Start the engine and let it idle for several minutes, release parking brake, select a gear position, and open the throttle. Always look straight ahead and drive with both hands on the steering wheel.
- When backing up use extreme caution. Be sure the path is clear and apply the throttle slowly. Do not steer abruptly when backing up because it could lead to loss of control or rollover.

Dear MTV Rider:

By following the instructions outlined in this manual you will know how to operate your MTV. Also you are being provided instructions on how to maintain your MTV, so you can ride safely. Be aware of the Safety Instructions.

Have a safe and enjoyable ride.

- Should any parts or components of the MTV be changed, it may cause the warranty to become invalid. Consult your authorized dealer before making any modification.
- Damage caused by using non-genuine parts could invalidate the warranty.
- Failure to follow the instructions outlined in this manual could invalidate warranty claims.
- Genuine accessories for the MTV are made according to the contract between the dealer and the manufacturer.
- The manufacturer reserves the right to introduce any modification without prior notice.

SAFE RIDING TIPS:

- Before embarking on any journey, make sure your MTV is in good and safe working order.
- Always wear an approved helmet. Helmets are your best defense against serious head injuries.
- In addition to your helmet, wear eye and face protection. Long pants, gloves, boots and a durable long-sleeved jacket are recommended.
- Be seen! Wear brightly colored clothing.
- Never drink alcohol or take drugs before operation of an MTV.
- Always indicate when you are turning left or right.
- Be aware of other road users' intentions.
- Leave plenty of room between you and the vehicle in front.
- Slow down before entering blind turns and be watchful at junctions and intersections.
- Watch for hazards on the road or trail way.
- Don't speed – 50 percent of drivers involved in serious accidents were speeding.

SERVICE RECORD

PDI

Date: _____

Hour Meter Reading: _____

Dealer Stamp: _____

1st Service

Date: _____

Hour Meter Reading: _____

Dealer Stamp: _____

2nd Service

Date: _____

Hour Meter Reading: _____

Dealer Stamp: _____

3rd Service

Date: _____

Hour Meter Reading: _____

Dealer Stamp: _____

4th Service

Date: _____

Hour Meter Reading: _____

Dealer Stamp: _____

5th Service

Date: _____

Hour Meter Reading: _____

Dealer Stamp: _____

6th Service

Date: _____

Hour Meter Reading: _____

Dealer Stamp: _____

7th Service

Date: _____

Hour Meter Reading: _____

Dealer Stamp: _____

8th Service

Date: _____

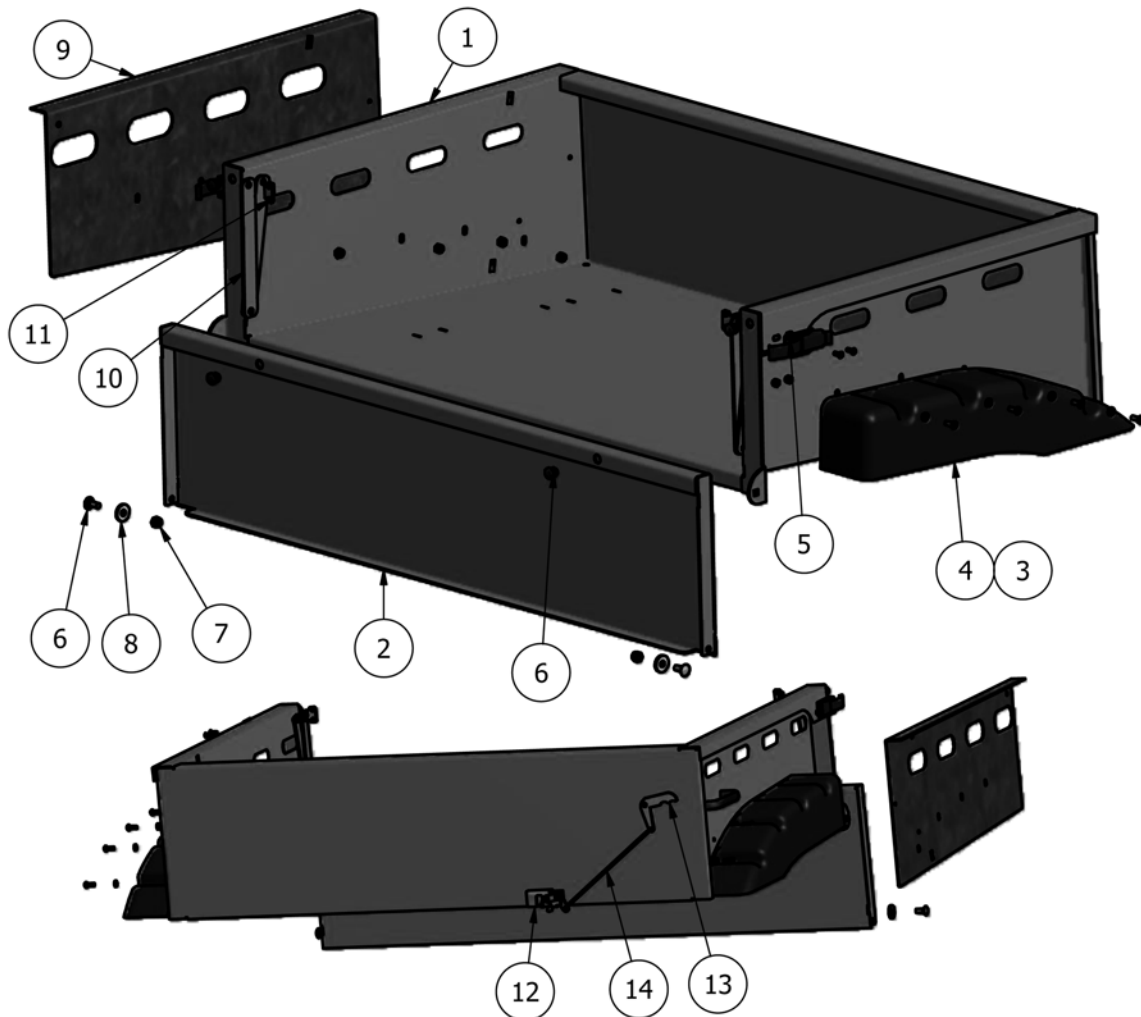
Hour Meter Reading: _____

Dealer Stamp: _____

UTV PARTS MANUAL 1500G Gas

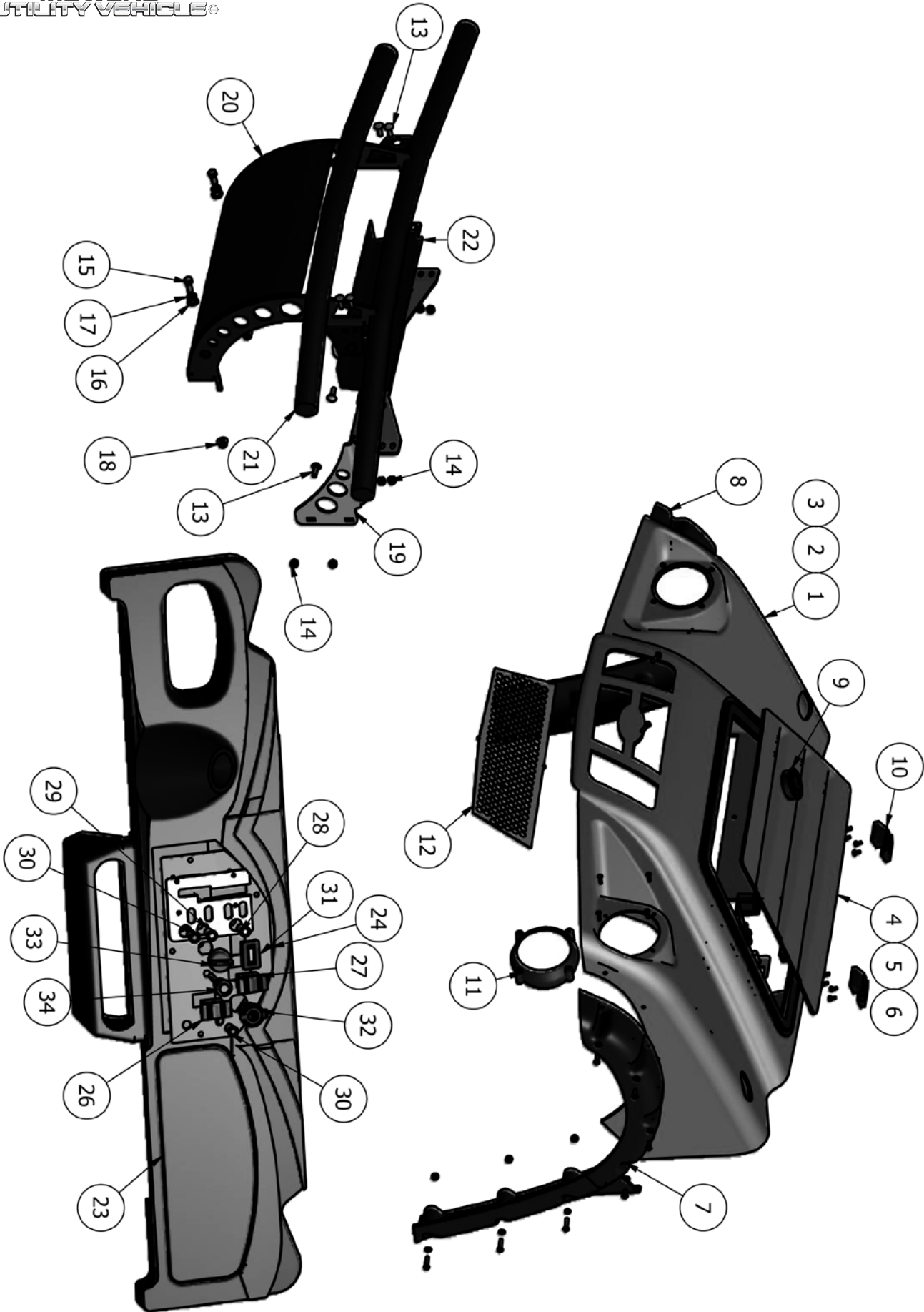
Table of Contents

Dump Bed Assembly	17
Hood, Dash & Bumper Assembly	18-19
Roll Cage Assembly	20
Front Gas Tank & Steering Assembly	21
Seat Frame Assembly	22-23
Brake Pedal & Battery Compartment Assembly	24-25
Front Axle Assembly	26-27
Brake Cylinder and Lines.....	28
Exhaust Assembly.....	29
Engine	30-31
Rear Axle Assembly	32-33
Engine Assembly.....	34



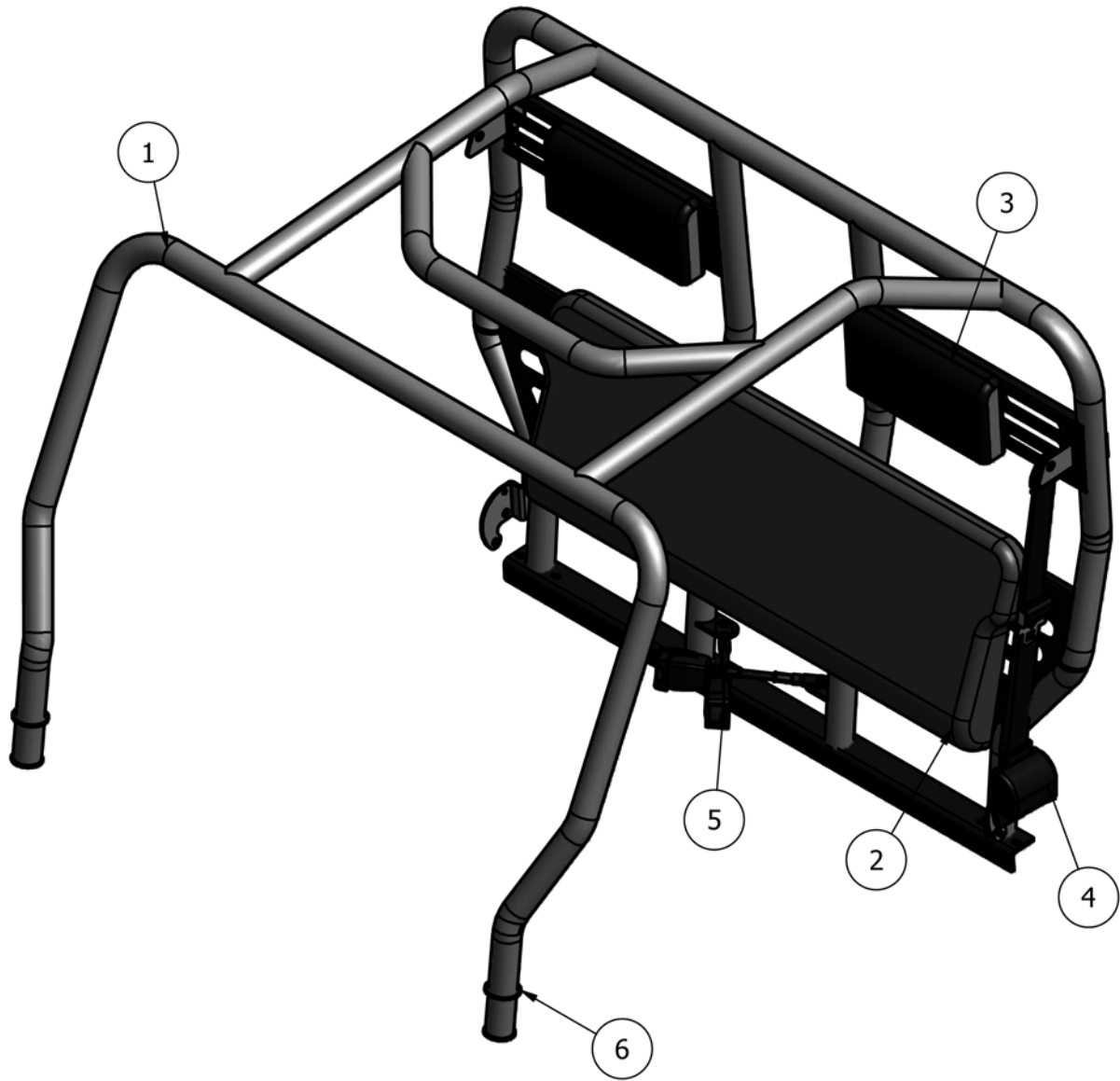
Parts List

ITEM	QTY	PART NUMBER	DESCRIPTION
1	1	660-1000-00	Orange Bed
2	1	660-0010-00	Orange Tailgate
3	1	674-1080-00	Bed Fender Top Left
4	1	674-1075-00	Bed Fender Top Right
5	2	652-2005-00	Tailgate Latch
6	2	618-8062-00	5/16-18x3/4 Carriage Bolts Zinc
7	2	613-8047-00	5/16-18 Nylon Insert Locknut Zinc Orange Nylon
8	2	019-6042-00	.360ID Plastic Washer
9	1	660-1050-00	Bed Panel Right Camo
10	4	739-4004-00	Tailgate Support Bracket Right
11	1	739-4002-00	Tailgate Support Bracket Left
12	1	652-6010-00	Rotary Latch
13	1	734-1000-00	Dump Bed Actuaion Lever
14	1	735-7000-00	Bed Latch Push Rod

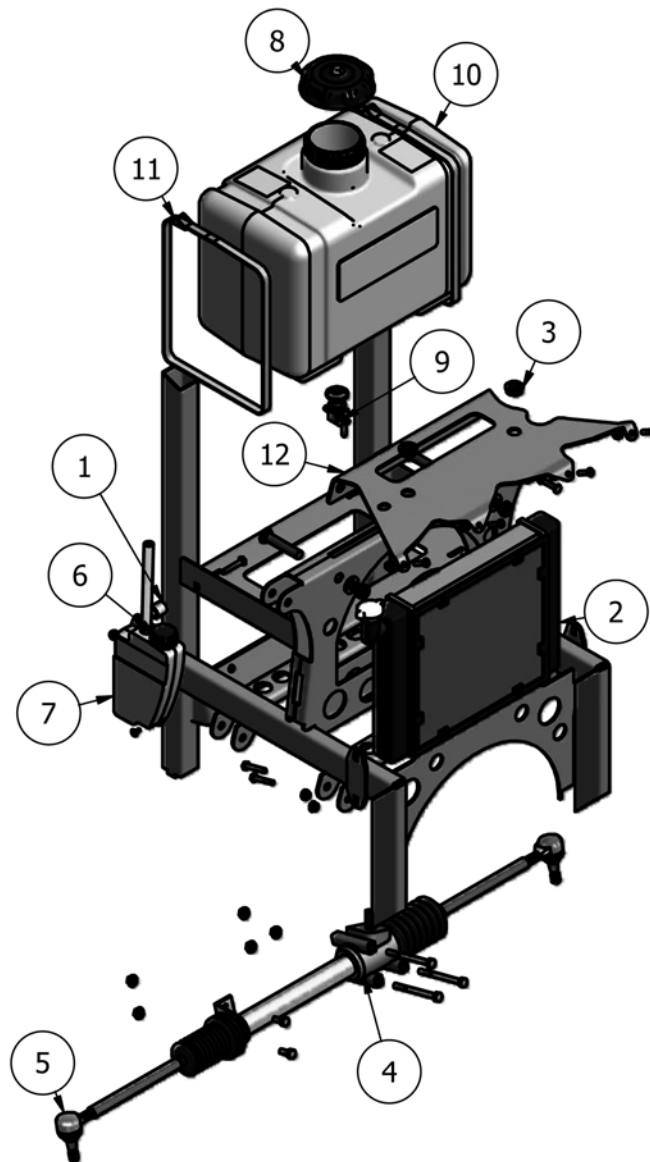


Parts List			
ITEM	QTY	PART NUMBER	DESCRIPTION
1	1	659-1000-00	Orange Hood
2	1	659-1000-10	Black Hood
3	1	659-1000-50	Camo Hood
4	1	659-2000-00	Hood Hatch Door (Orange)
5	1	659-2000-10	Black hood Hatch
6	1	659-2000-50	Camo Hood Hatch
7	1	675-1000-00	Front Left Fender Flare
8	1	675-1075-00	Front Right Fender Flare
9	1	652-5000-00	Hood Latch
10	2	653-5010-00	Hood Hinge
11	2	688-1000-00	UV Headlight
12	1	602-1010-00	Front Grill
13	8	618-xxxx-00	.3125 x 1 Carriage Bolt Zinc
14	8	613-8047-00	5/16-18 Nylon Insert Locknut Zinc Orange Nylon
15	2	618-6049-00	3/8-16 X 1 GR 5 Hex Bolts Zinc
16	2	619-5029-00	3/8 USS Flat Washer Zinc
17	2	619-5037-00	3/8 Lockwasher Zinc
18	2	613-5202-00	3/8-16 Nylock Flange Nut
19	1	739-4130-00	Winch Mount
20	1	614-2100-00	Brush Guard
21	4	614-3410-00	1-3/4" Round Tubing Plug
22	1	614-2110-00	Front Bumper Insert

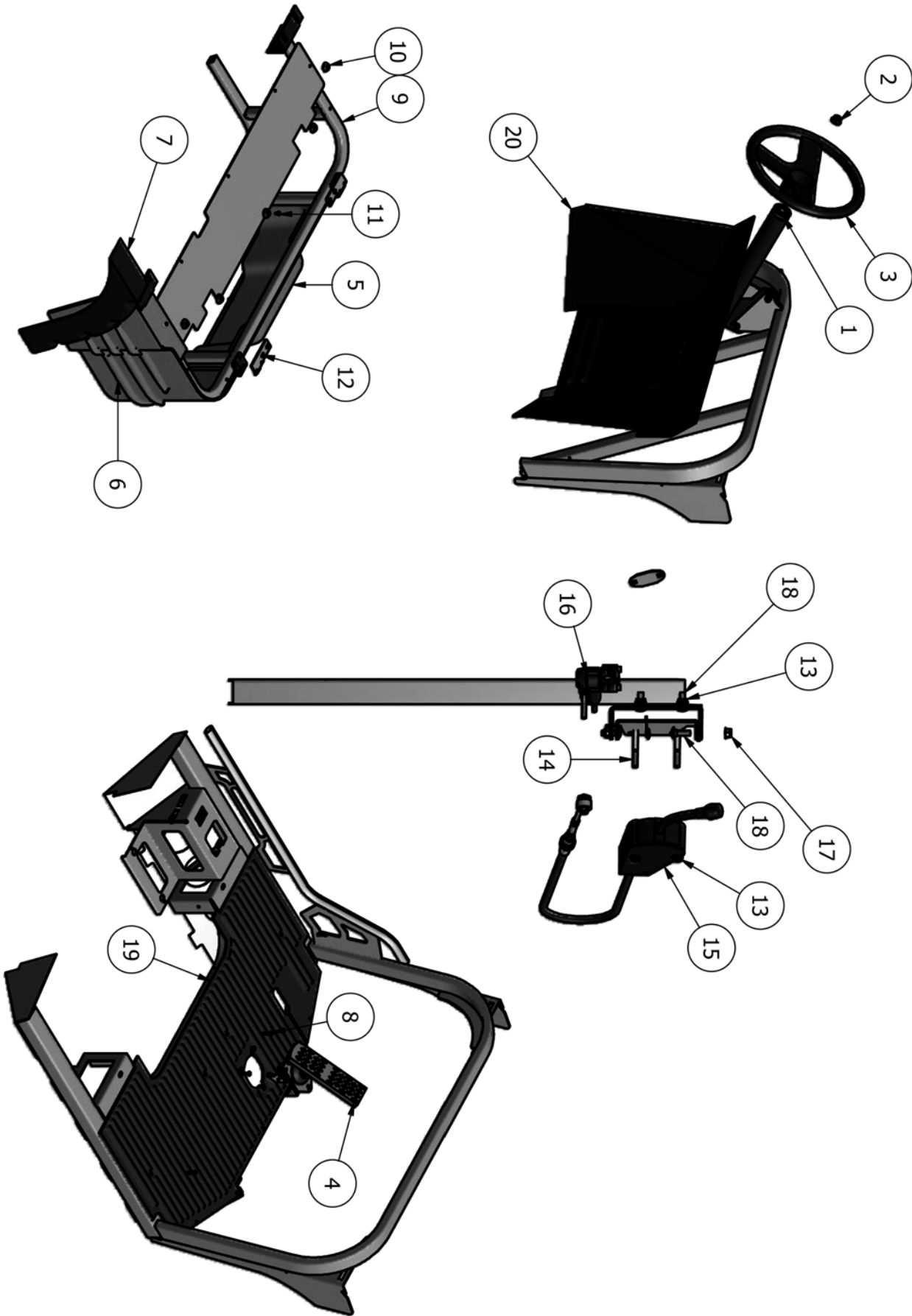
Parts List			
ITEM	QTY	PART NUMBER	DESCRIPTION
23	1	679-5000-00	Plastic Dash
24	1	779-2011-00	Dash Plate
26	1	777-1020-00	Dump Switch
27	1	777-1030-00	Light Switch
28	1	788-1001-00	Shift Indicator Light Amber
29	1	788-1000-00	Shift Indicator Light Green
30	2	788-1002-00	Shift Indicator Light Red
31	1	783-1000-00	Tach/Hour Meter
32	1	677-2075-00	12 Volt Auxilliary Plug
33	1	777-1000-00	Ignition Switch
34	1	764-1005-00	Choke Cable
13	1	779-5702-00	Shifter Cover



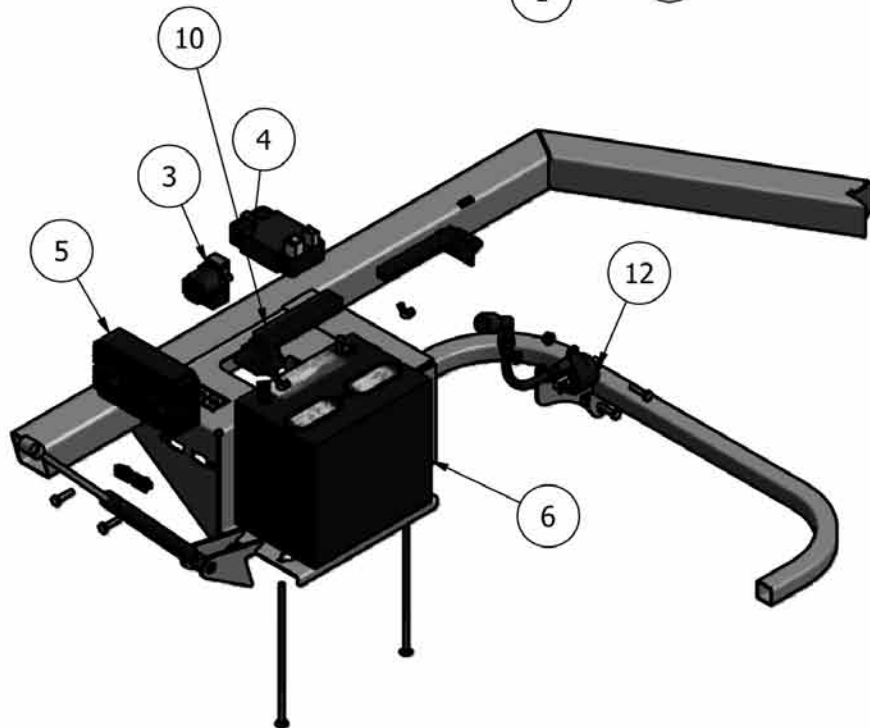
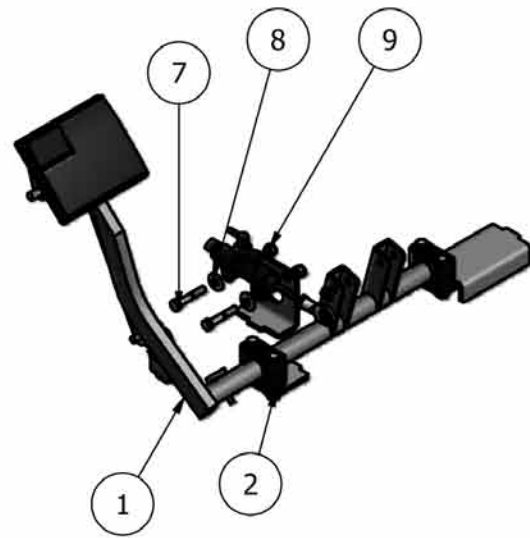
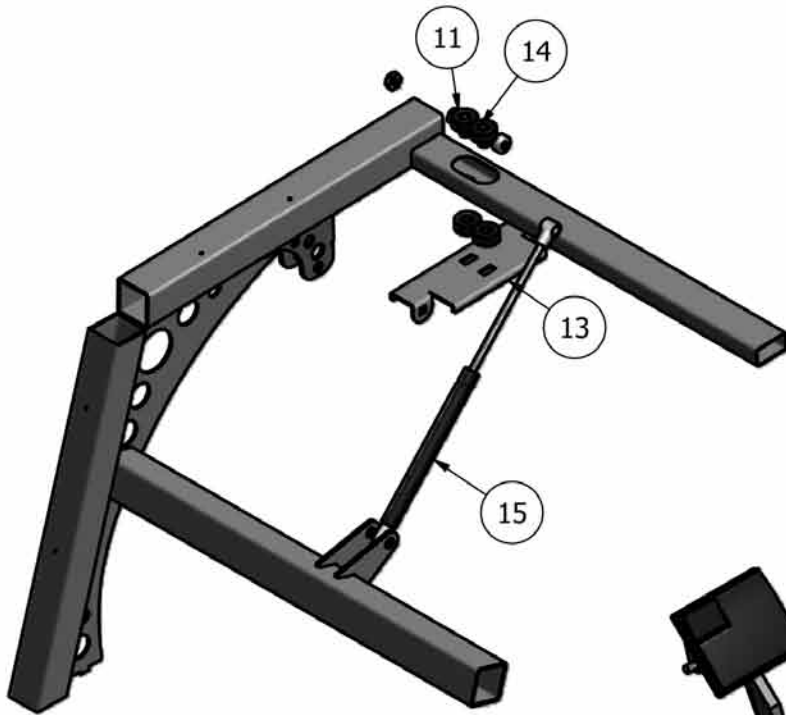
Parts List			
ITEM	QTY	PART NUMBER	DESCRIPTION
1	1	680-2011-00	Roll Cage - 2010 - 2 Seater
2	1	671-1050-00	Bench Seat Back
3	2	671-1055-00	Seat Headrest
4	2	671-0035-00	Retractable Seat Belt 3pt
5	2	671-0030-00	Seat Belt Latch
6	2	619-0019-00	Rubber Grommet



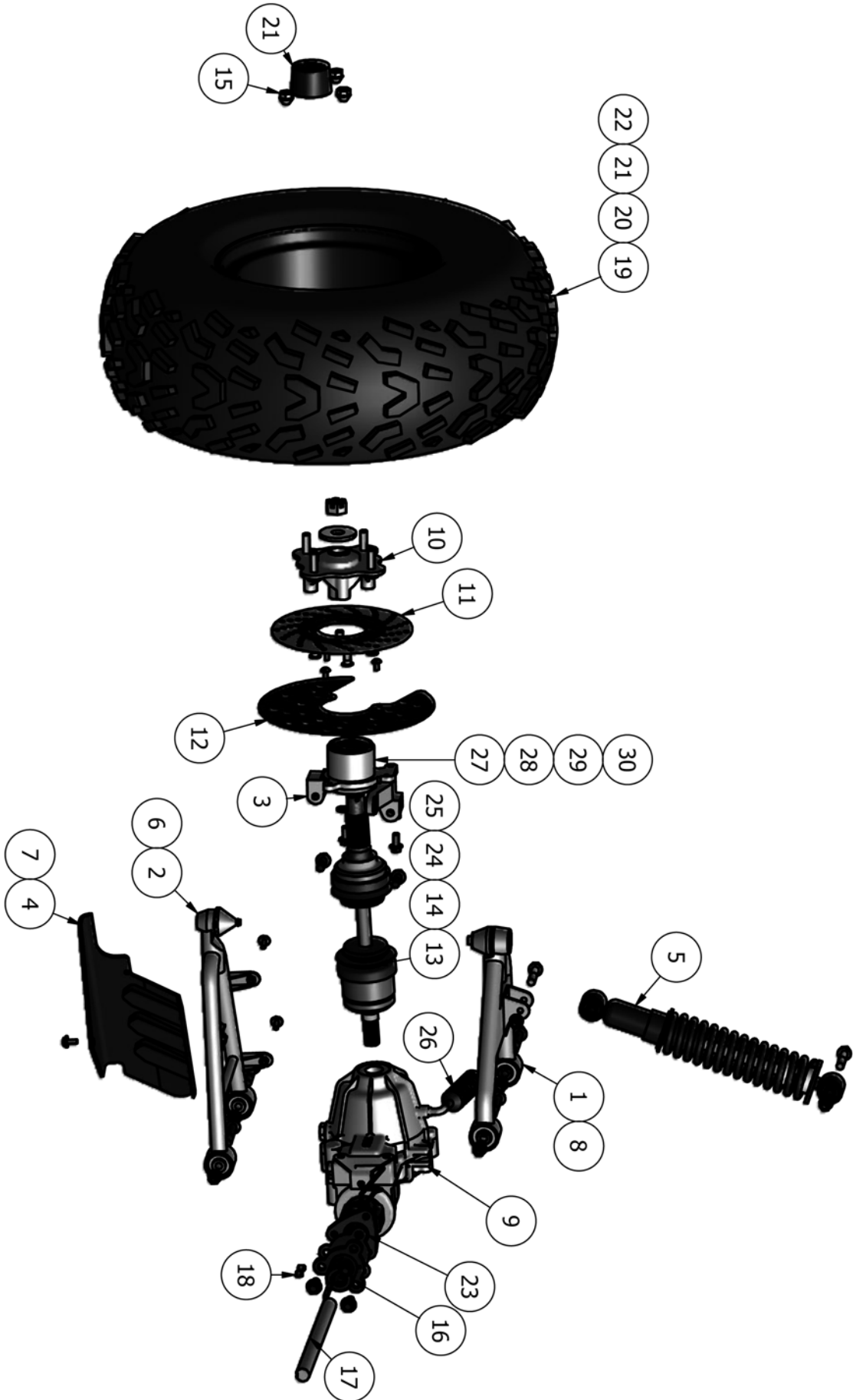
Parts List			
ITEM	QTY	PART NUMBER	DESCRIPTION
1	1	025-5203-00	5/16" IDx1" Spacer
2	1	761-1000-00	Radiator
3	4	719-5000-00	Radiator Grommets
4	1	731-1000-00	Rack and Pinion Steering Gear
5	2	710-1011-00	Tie Rod End
6	1	767-1011-00	Overflow Bottle Cap
7	1	767-1010-00	Water Overflow Bottle
8	1	767-1002-00	Fuel Tank Cap
9	1	767-1003-00	Fuel Tank Valve
10	1	767-1001-00	Fuel Tank
11	2	772-1000-00	Fuel Tank Clamp
12	1	679-1010-00	Upper Radiator Support Bracket



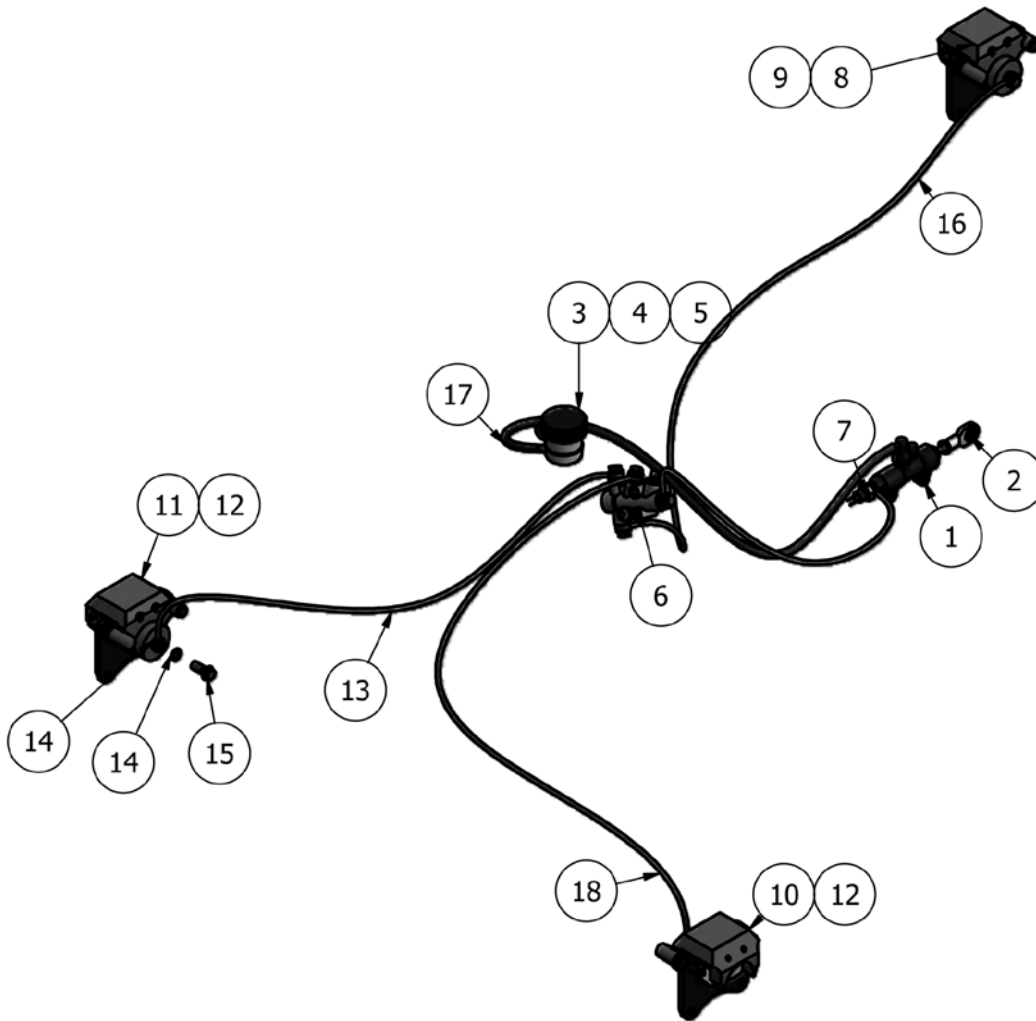
Parts List			
ITEM	QTY	PART NUMBER	DESCRIPTION
1	1	703-9000-00	Steering Column
2	1	613-7021-00	5/8-11 Nylon Insert Locknut Zinc Orange Nylon
3	1	628-0001-00	Steering Wheel
4	1	735-1000-00	Throttle Pedal
5	1	780-1000-00	Seat Frame Cover Center Orange
6	1	680-1000-00	Seat Frame Cover Right Orange
7	1	674-1050-00	Lower Fender Right
8	19	619-2037-00	1/4 x 1 Buttonhead Bolt
9	1	703-3040-00	Seat Frame Top Bar
10	5	629-4010-00	15/16 DIA Recessed Bumper Rubber BLK
11	6	630-2020-00	8/32 x 1/2 Pan Phillips Machine Screw
12	1	739-3105-00	Seat Latch Right
13	9	013-9002-00	5/16-18 Hex Flange Nuts Zinc w/Serations
14	2	018-5344-00	5/16 x 2 1/2 Bolt
15	1	756-1000-00	Shifter Body
16	1	756-1010-00	4wd Lever
17	2	613-8049-00	5/16-18 Nylon Insert Flange Nut Zinc Orange Nylon
18	4	618-8065-00	.3125 x 1 Carriage Bolt Zinc
19	1	714-5000-00	Plastic Floor Board
20	1	779-1022-00	fire Wall Plastic



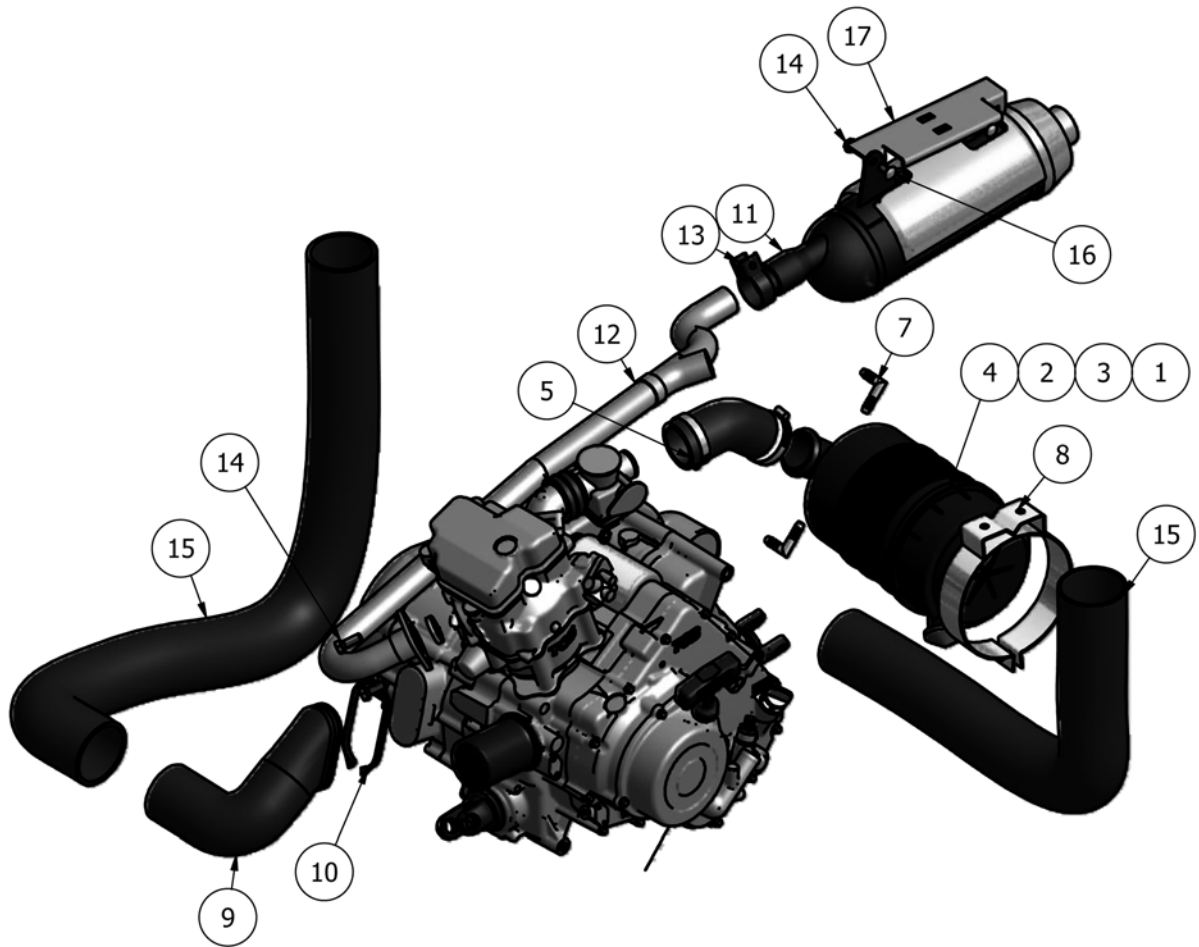
Parts List			
ITEM	QTY	PART NUMBER	DESCRIPTION
1	1	669-0004-00	Brake Pedal Assembly
2	1	626-1002-00	Pillow Block
3	1	715-1080-00	Solenoid, Starter
4	1	786-1020-00	CDI Box
5	1	786-1021-00	Rectifier, Regulator
6	1	768-8049-00	Battery
7	6	618-8059-00	5/16-18 x 1-3/4 Grade 5 Hex Bolt
8	4	619-8044-00	5/16 USS Flat Washer Zinc
9	7	613-8047-00	5/16-18 Nylon Insert Locknut Zinc Orange Nylon
10	1	643-8929-98	Battery Hold Down
11	2	632-5052-00	Bronze Bushing
12	1	715-1070-00	Coil, Ignition
13	1	739-3060-00	Muffler Bracket
14	4	732-1010-00	Motor Mount Bushing (Set)
15	1	635-7035-00	Dump Bed Gas Assist



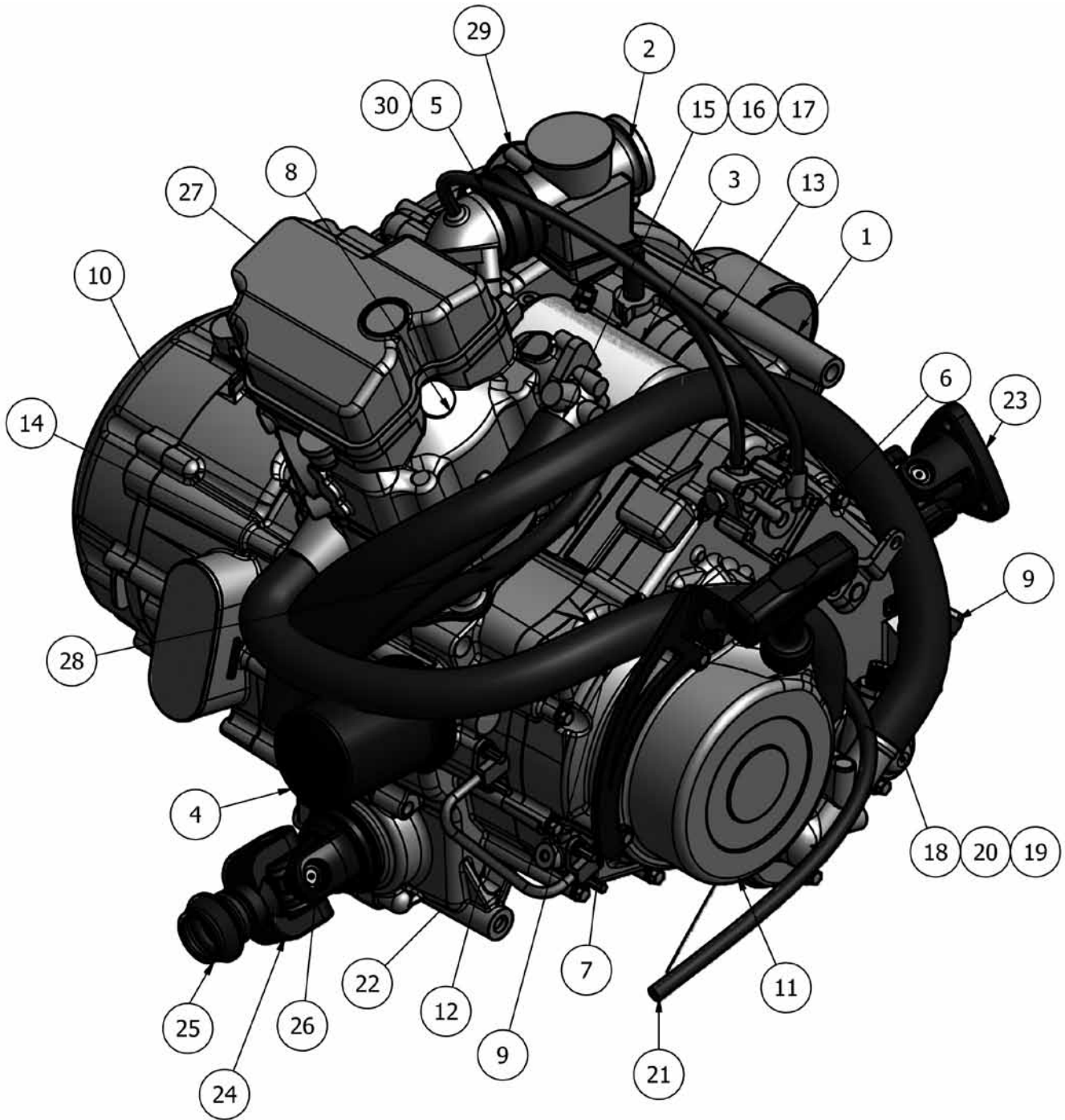
Parts List			
ITEM	QTY	PART NUMBER	DESCRIPTION
1	1	787-1001-00	Left upper A-Arm
2	1	787-1011-00	Left Lower A-Arm
3	1	737-2011-00	Front Left Spindle
4	1	743-9001-00	Left A-Arm Guard
5	2	787-1020-00	Front Shock
6	1	787-1010-00	Right Lower A-Arm
7	1	743-9000-00	Right A-Arm Guard
8	1	787-1000-00	Right Upper A-Arm
9	1	756-1020-00	Front Differential
10	2	737-2000-00	Front hub
11	2	716-1042-00	Front Brake Disk
12	2	716-1043-00	Front Splash Guard
13	1	737-1001-00	Left Front Half-Shaft
14	1	737-1000-00	Right Front Half-Shaft
15	8	713-1010-00	N05003 Lug Nut
16	1	736-1010-00	Drive Shaft Coupling
17	1	735-1000-00	Driveshaft
18	4	630-2000-00	5/16-18x3/8 Set Serw
19	1	722-2000-00	Front Tire
20	2	722-3000-00	Front Wheel
21	1	622-4060-00	Black Center Cap
22	1	722-1000-00	Front Right Wheel Assembly
23	1	725-3001-00	Driveshaft Spacer
24	2	736-1040-00	Inner Half-Shaft Boot
25	2	736-1041-00	Outer Half-Shaft Boot
26	1	615-4050-00	TGB Case Breather
27	2	712-1005-00	Front Outer Oil Seal
28	4	710-1020-00	Front Wheel Bearing
29	2	725-1010-00	Front Bearing Spacer
30	2	712-1000-00	Front Inner Oil Seal



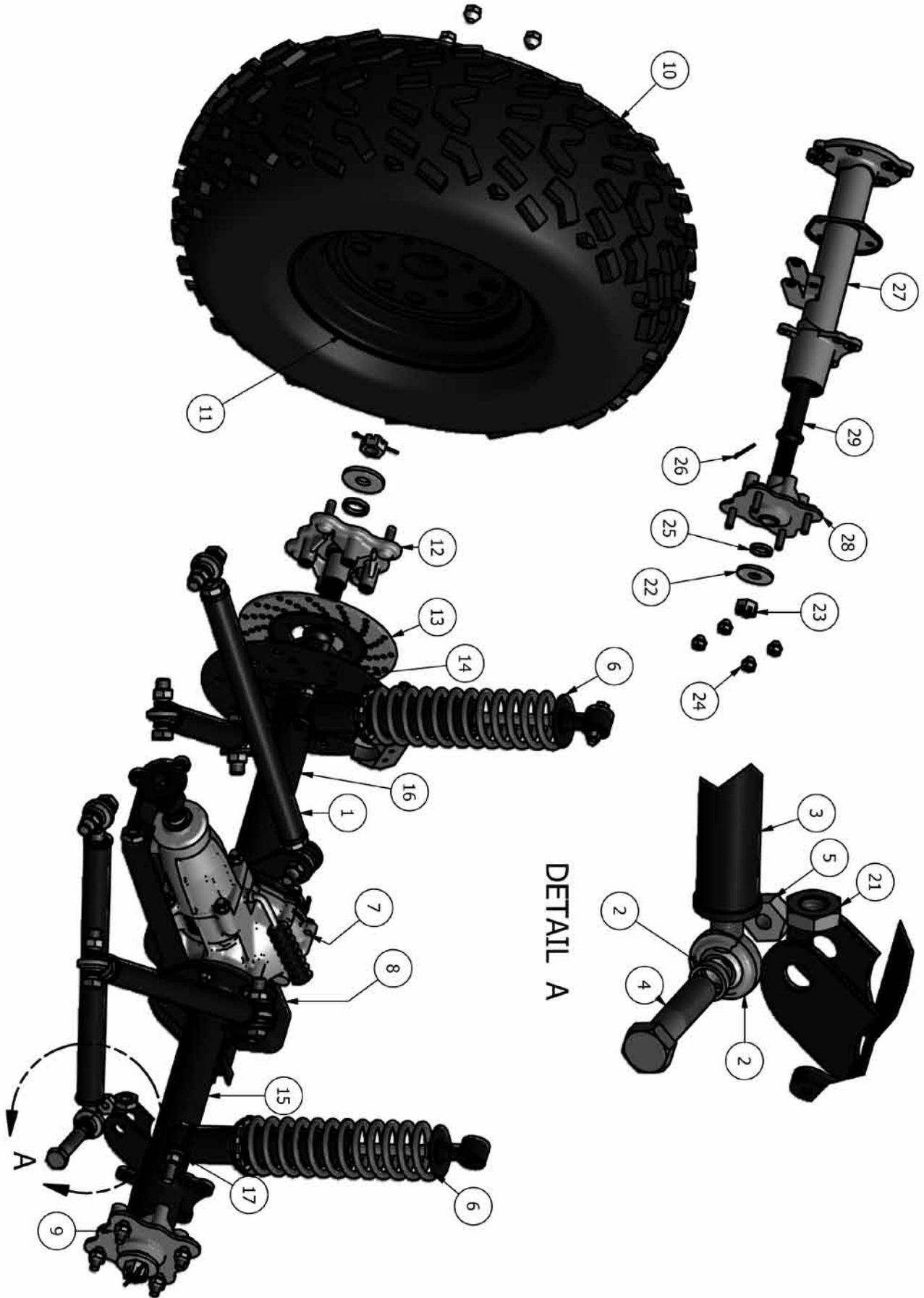
Parts List			
ITEM	QTY	PART NUMBER	DESCRIPTION
1	1	716-1000-00	Master Cylinder
2	1	699-4010-00	Heim Joint
3	1	716-1031-00	Brake Reservoir Cap
4	1	716-1030-00	Brake Reservoir
5	1	716-1032-00	Brake Reservoir Bladder
6	1	716-1020-00	Brake Line Manifold
7	1	777-1010-00	Brake Pressure Switch
8	1	716-1050-00	Rear Brake Caliper Assembly
9	1	716-1051-00	Rear Brake Pad (Set)
10	1	716-1042-00	Front Left Caliper Assembly
11	1	716-1040-00	Front Right Caliper Assembly
12	2	716-1041-00	Front Brake Pad (Set)
13	1	716-1010-00	Front Right Brake Line
14	16	716-1015-00	Banjo Bolt Washer M10x1.5x1.5
15	7	716-1014-00	Banjo Bolt M10x1.25
16	1	716-1012-00	Rear Brake Line
17	1	751-1005-00	Brake Reservoir hose
18	1	716-1011-00	Front Left Brake Line



Parts List			
ITEM	QTY	PART NUMBER	DESCRIPTION
1	1	763-1000-00	Air Box Assembly
2	1	763-1001-00	Air Filter
3	1	763-1002-00	Air Box Cap
4	1	763-1003-00	Air Box Canister
5	1	736-1030-00	Air Filter Boot
6	2	618-6049-00	3/8-16 X 1 GR 5 Hex Bolts Zinc
7	2	724-1030-00	3/8" Barbed Fitting
8	1	772-1100-00	Air Canister Clamp
9	1	736-1000-00	CVT Vent Adaptor
10	1	772-1000-00	CVT Intake Clamp
11	1	715-1030-00	Muffler
12	1	715-1031-00	Header Pipe
13	1	772-1090-00	Muffler Clamp
14	2	013-9002-00	5/16-18 Hex Flange Nuts Zinc w/Serations
15	6.5'	751-1010-00	3" CVT Vent Hose
16	2	618-8062-00	5/16-18x3/4 Carriage Bolts Zinc
17	1	739-3060-00	Muffler Bracket

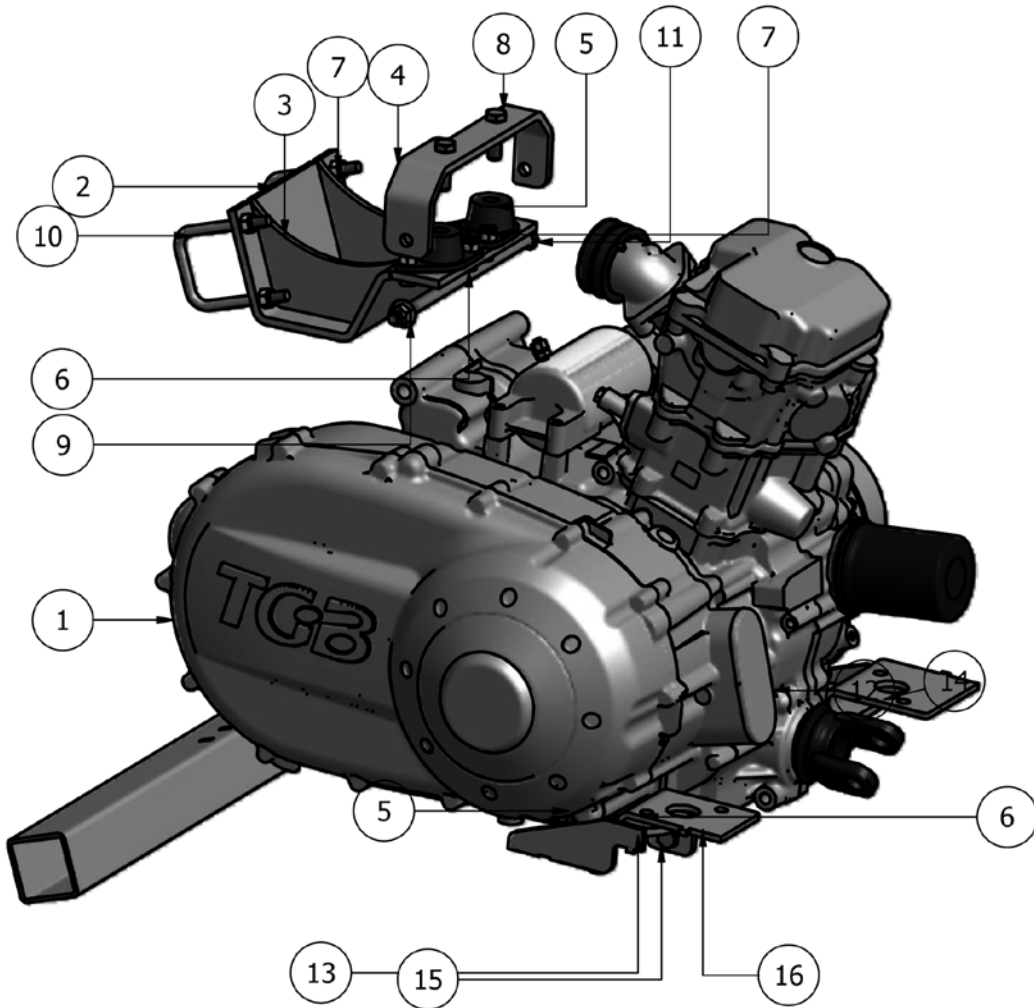


Parts List			
ITEM	QTY	PART NUMBER	DESCRIPTION
1	1	715-1001-00	Engine, 400cc
2	1	715-1010-00	Carburetor
3	1	715-1020-00	Starter
4	1	763-2000-00	Oil Filter
5	1	736-1020-00	Carburetor to Manifold Boot
6	1	750-1000-00	Fuel Pump
7	1	739-4060-00	Shift Cable Bracket
8	1	745-1040-00	Spark Plug
9	1	715-1050-00	Dip Stick
10	1	741-1000-00	CVT Belt
11	1	715-1060-00	Recoil Starter
12	1	751-1003-00	External Oil Line
13	1.33'	751-1016-00	3/16" Hose
14	1	751-1002-00	Water Pump to Cyl Head Hose
15	1	751-1007-00	Coolant Return Hose
16	3'	751-1012-00	5/8" Heater Hose
17	2	724-1010-00	5/8" Hose Connector
18	1	751-1006-00	Coolant Intake Hose
19	1.66'	751-1011-00	3/4" Heater Hose
20	2	724-1020-00	3/4" Hose Connector
21	5.75'	751-1014-00	1/4" Fuel Line - Low Perm
22	1	715-0002-00	Oil Drain Plug
23	1	746-1010-00	Rear Yoke
24	1	746-1000-00	Front Yoke
25	1	736-1050-00	Plunge Joint Boot Front
26	1	799-1010-00	U-Joint
27	1	747-1000-00	Timing Chain
28	5.58'	751-1013-00	5/16" Hose - High Temp
29	1	764-1000-00	Throttle Cable
30	2	772-1071-00	Carburetor Boot Clamp



Parts List			
ITEM	QTY	PART NUMBER	DESCRIPTION
1	2	703-6502-00	Short 4-Link Bar
2	8	648-7050-00	4 Link Rod end
3	2	703-6503-00	Long 4-Link Bar
4	8	618-6059-00	5/8-11 X 2-1/2 GR 5 Hex Bolts Zinc
5	8	613-7021-00	5/8-11 Nylon Insert Locknut Zinc Orange Nylon
6	2	687-5000-00	Rear Shock
7	1	756-1030-00	Rear Differential
8	1	739-9000-00	Hitch
9	8	713-1010-00	N05003 Lug Nut
10	1	722-2000-00	Front Tire
11	1	722-3050-00	Rear Wheel_Gas
12	2	737-2050-00	Rear Hub
13	1	716-1052-00	Rear Brake Disk
14	1	716-1053-00	Rear Brake Disk Splash Guard
15	1	765-1002-00	Left Rear Axle Tube
16	1	765-1001-00	Right Rear Axle Tube
21	4	613-1000-00	5/8" Jam Nut

Parts List			
ITEM	QTY	PART NUMBER	DESCRIPTION
22	2	765-1010-00	Rear Hub Washer
23	2	765-1012-00	Castle Nut
24	8	713-1010-00	N05003 Lug Nut
25	2	765-1014-00	Hub Spacer
26	2	765-1016-00	Cotter Pin
27	1	765-1002-00	Left Rear Axle Tube
28	2	737-2050-00	Rear Hub
29	1	737-1011-00	Left Rear Axle Shaft



Parts List

ITEM	QTY	PART NUMBER	DESCRIPTION
1	1	715-1001-00	Engine, 400cc
2	1	739-3077-00	Upper Motor Mount Main Section
3	2	739-3076-00	Upper Motor Mount Gusset
4	1	739-3079-00	Upper Motor Mount Bracket
5	4	732-1013-00	Flanged Motor Mount Bushing
6	10	618-8063-00	5/16-18 x 3/4 GR 5 Hex bolt Zinc
7	14	613-8047-00	5/16-18 Nylon Insert Locknut Zinc Orange Nylon
8	2	618-5040-00	3/8-16 x 1-1/4 Hex Bolt GR5
9	4	613-5202-00	3/8-16 Nylock Flange Nut
10	2	618-1000-00	5/16-18x2 BL x 3 LL SQ Bend U-Bolt GR 8 Zinc
11	1	618-4703-00	3/8-16 x 8-1/2 Hex Bolt GR5
12	1	739-3078-00	Front Motor Mount Welded
13	1	739-3073-00	Front Motor Mounting Bracket Right
14	1	739-3074-00	Front Motor Mounting Bracket Left
15	1	618-4702-00	3/8-16 x 10 Hex Bolt GR5
16	1	725-1030-00	2 Inch Spacer

NOTES: _____

**2011 BAD BOY INC
4X4 Gasoline MTV
LIMITED WARRANTY**

Limited, 6 Month Warranty

Bad Boy, Inc. will, at its option, repair or replace, without charge, any part covered by the warranty which is found to be defective in material and/or workmanship within 6 months after date of sale to the original retail purchaser of a new Bad Boy 4X4, Gasoline MTV. This limited warranty will be subject to certain limitations. Also, Bad Boy, Inc. will not be responsible for defects attributed to abuse, accidents, nature or vandalism.

Warranty Period

Bad Boy MTV 4X4 gasoline vehicles shall carry a warranty of 6 months after the specific date of purchase for both private and commercial users. This 6 month warranty will only be valid for the original purchaser of the vehicle, and the warranty will not be transferrable to succeeding purchasers.

Replacement Parts

Bad Boy MTV dealers will repair or replace, at Bad Boy Inc's option, any defective part during the six month warranty period. The parts, to be warranted, must be defective in material and/or workmanship. All replacement parts must be obtained from Bad Boy, Inc.

Battery Warranty

The battery used to power the Bad Boy MTV will carry a 6 month, free replacement warranty. These warranty claims will be handled by the manufacturer, Interstate Battery.

Exclusions

This warranty does not cover defects caused by depreciation or damage caused by normal wear, accidents, improper maintenance, improper use or abuse of the product, or failure to follow the instructions contained in any owner's manual for operation and maintenance. Some specific exclusions include but are not limited to high wear items such as: light bulbs, spark plugs, wheels, tires, brakes, cv axle boots, filters or upholstery, etc.

Responsibility of the Customer

It is the responsibility of the customer to register his/her machine for warranty by promptly returning a completed warranty registration card within 30 days from the date of purchase. Also, the customer must operate and maintain his/her machine within the proper guidelines of the owner's manual.

This warranty gives you specific legal rights, and you may also have other rights, which may vary from state to state.

**Any warranty issues that arise can be handled by your Bad Boy MTV/LSV dealer or at:
Bad Boy, Inc --- 102 Industrial Drive --- Batesville, AR 72501 --- (866) 622-3269**

BAD BOY MOWERS UTILITY VEHICLE OWNERS REGISTRATION & TRAINING CERTIFICATE

(Keep original copy on file at your dealership)

VIN/PIN_____

MODEL_____

DATE OF PURCHASE_____ DEALER_____

PURCHASER LAST NAME_____ FIRST NAME_____

ADDRESS_____

CITY_____ STATE_____ POSTAL CODE_____

DAY PHONE_____ EVENING PHONE_____

Safety Check List

Purchaser: By initialing each line, I understand and give my word of Honor

_____ This Utility Vehicle must not be operated by anyone under the age indicated in the Operator's manual. I will not allow anyone under the age indicated in the Operator's manual to operate this vehicle. Every operator must read and understand the Operator's manual before riding this Utility Vehicle.

_____ This Utility Vehicle must not be operated by anyone who does not have a valid driver's license.

_____ Never ride an Utility Vehicle after consuming alcohol or drugs.

_____ Overly aggressive use on inclines may cause the Utility Vehicle to flip over.

_____ Always ride within your abilities.

_____ Never attempt jumps or other stunts.

_____ Always be extra careful when riding on unfamiliar terrain, steep slopes, or when encountering obstacles.

_____ I have read the above warnings, and I understand that SEVERE INJURY OR DEATH can result from ignoring these warnings or from improper use.

_____ I will watch the safety/training video provided by Bad Boy Mowers before operating this vehicle.

Purchaser's Signature Date

I have reviewed the safety features and Operator's Manual with this purchaser and to all appropriate immediate family members prior to their taking delivery of this UTV and qualifying them for warranty. The UTV described above has been serviced and approved for delivery by me or an employee on my behalf. I will maintain this Owner Registration Form from the customer and me in a paper form along with other books and records of the dealership.

Authorized Dealership Signature Date

NOTES: _____

BAD BOY, INC.

102 INDUSTRIAL DRIVE
BATESVILLE, AR 72501

1.866.622.3269

www.badboymowers.com

Technical Support:

David Watts

Randel Davis randel.davis@badboymowers.com

Jake Reed jake.reed@badboymowers.com

Warranty:

Dustin Tissiere dustin@badboymowers.com Ext 6613

Bill Hurst bill@badboymowers.com Ext 6617

Nathan Simmons

Parts:

Jake Reed jake.reed@badboymowers.com



Bad Boy, Inc.
102 Industrial Drive
Batesville, Arkansas 72501
(870) 698-0090